



PRICES ARE CHANGING CONSTANTLY RIGHT NOW SO BE AWARE THAT YOUR TOTAL COULD BE DIFFERENT THAN WHAT THIS CATALOG SHOWS. BE SURE TO CALL US FOR THE MOST RECENT AND ACCURATE PRICING!



VISIT US ONLINE AT FISHCREEK.BIZ
ORDER TOLL FREE: 1-800-446-2611
907-373-2650 FAX: 1-907-373-2634

Catalog FCS-54



E-mail us at:
fcsales@mtaonline.net

5800 E. Columbus Way
WASILLA, AK 99654

*Check facebook for
new product and
sales info*

RAIN GEAR

NELSON-RIGG SR-6000 STORMRIDER RAINSUIT

\$79.95

Two piece 100% waterproof rain suit. Softer polyester outer shell with PVS backing. Jacket has full length zipper with Velcro storm flap. Two large outer pockets and cooling vents under each arm. Soft corduroy inner collar with hood. Elasticized waist and adjustable cuff with velcro tabs.

Reflective striping on both jacket and pants for visibility. Pants feature elasticized waist band and cuffs with oversized zipper gussets and elasticized boot stirrups.



AVAILABLE IN BLACK, HI-VIS, ORANGE IN
SIZES SMALL-4XL



NELSON-RIGG WEATHERPRO RAIN SUIT

\$59.95

Two piece 100% waterproof rain suit. Soft polyester outer shell with PVS backing. Jacket has full length zipper with velcro storm flap. Outer waterproof chest pocket. Elasticized cuff and waist. Reflective striping for visibility. Pants feature ankle gussets for easy boot entry.

AVAILABLE IN BLACK, IN SIZES
SMALL-3XL

GRUNDENS ZENITH YOUTH RAIN GEAR

Grundens Zenith 117 Bib Pants, Kids Rain Pants. Foulweather Gear. A lightweight, soft, flexible, 100% waterproof material that offers good durability and is inexpensive.

JACKET SZ8-SZ16 \$74.95 Z282NVY(SZ)

BIBS SZ8-SZ16 \$74.95 Z117NVY(SZ)



GLOVES AND BOOTS

Yellow Chore Gloves

14-oz. heavy-napped fleece-out cotton flannel, lined and bonded with rubberized adhesive. Clute cut design. Knit wrist. Size: Regular & Large Other:

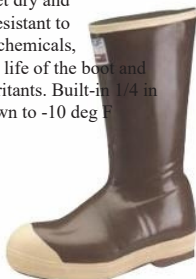


1 PAIR, Reg. Part No. 4032-PR.....\$4.95
1 DOZEN Reg. Part No. 4032-DZ.....\$57.95

Xtratuff Insulated Steel Toe Knee Boot

\$189.99

Seamless construction is 100% waterproof to keep workers feet dry and comfortable. Built-in polymeric foam insulation provides added warmth. Chevron outsoles provide excellent traction to reduce injuries from slip or fall hazards. Removable insoles and durable fabric linings provide shock absorption and wick away moisture to keep workers feet dry and comfortable. Neoprene is highly resistant to many organic and inorganic acids, chemicals, and contaminants, prolonging the life of the boot and keeping workers free of harmful irritants. Built-in 1/4 in polymeric foam insulates down to -10 deg F



AVAILABLE IN SIZES 7-14

MECHANIX GLOVES

Form fitting TrekDry material helps keep hands cool and comfortable
Adjustable Thermoplastic Rubber wrist closures create a secure fit
Touchscreen capable synthetic leather provides the perfect blend of dexterity and durability

Black	26-9120SZ	\$31.99
Kryptek Highlander	26-9140SZ	\$33.99
Kryptek Typhon	26-9139SZ	\$33.99
Specialty Grip	26-9128SZ	\$35.99
Specialty Grip .5mm	26-9141SZ	\$35.99
Fast Fit Black	26-9305SZ	\$19.99



Klim Stash Jacket

Never be caught by surprise rain showers with the lightweight and packable Stash jacket. Waterproof, breathable, and easily packed into its own pocket, the Stash is ideal to keep in your vehicle or in your pack for peace of mind all year round.

AVAILABLE IN X-SMALL-5XL

\$170.00



Stows in it's own pocket



Klim Torque Jacket

KLIM's redesigned TORQUE JACKET utilizes the highest mid-layer insulation value in the lineup to provide maximum warmth and comfort. Featuring 80 Grams of 3M™ THINSULATE™ Platinum Insulation, the TORQUE boasts lightweight, highly packable and comfortable insulation. A true all-around performer.

Black, Gray, Blue, sizesXS- 3XL,
Part No.4080-sz-color \$\$249.99



PROPELLER HARDWARE

<p>Johnson / Evinrude (BRP)</p> <p>(A) Prop Nut 9.9-15hp. 18-3706 \$7.95</p> <p>(B) Prop Nut Kit 20 - 30 hp. 18-3717 \$11.95</p> <p>(C-D) Prop Nut Kit 40 - 140 hp. 18-3716 \$13.95</p> <p>(C-D) Thrust Washer 40-140 hp. 18-4222 \$49.29</p> <p>(E) Prop Nut Kit 150-300 hp. 18-3715 \$24.00</p> <p>(E) Thrust Washer 150-300 hp. 18-4223 \$43.99</p> <p>Cotter Pins (B) 1/8" x 3/4" Stainless Steel 18-3743 \$.90 ea. (C-D) 1/8" x 1-1/4" Stainless Steel 18-3742 \$1.10 ea. (E) 1/8" x 1-3/4" Stainless Steel 18-3741 \$1.25 ea.</p>	<p>Mercury</p> <p>Prop Nut Kit 30-60 hp 18-3702 \$15.99</p> <p>Prop Nut Kit Mercury 65 hp & up 18-3701 \$23.95</p> <p>Prop Nut s 35-60 hp 18-3704 \$15.20</p> <p>75 & 250hp. 18-3700....\$14.95</p> <p>Tab Washers 35-60 hp 18-3204 \$2.00</p> <p>Thrust Washers</p> <p>35 70 hp. 18-4233 \$34.95</p> <p>4 & 6 cyl inline 75-150 hp. 18-4221 \$34.95</p> <p>Merc V-6 & Sterndrive 18-4220 \$38.00</p> <p>Brass Castle Washer D&E Series motors converts Yam to Merc 18-3714 \$11.95</p>	<p>Suzuki</p> <p>Prop Nut Kit for 40,55,65hp 18-3777 \$24.95</p> <p>Prop Nut Kit for DT20,25,30C 18-3778 \$23.95</p> <p>Mercury 75 & up 18-3200 \$5.95</p>	<p>Yamaha</p> <p>Prop Nuts (B) 20-30 hp. 18-3792 \$5.95</p> <p>(C-D), all 40-F100 hp 18-3732 \$15.95</p> <p>(E) 115-250 hp. 18-3726 \$10.89</p> <p>(B) Prop Nut Kit 20-30 hp. 18-3771 \$25.95</p> <p>(B) Prop Spacer 20-30 hp. 18-3791 \$16.95</p> <p>(B) Thrust Washer 18-73979 \$23.95</p> <p>20-30 Nut Kit</p> <p>(C) Prop Nut Kit 40-50 hp. 18-73990 \$34.95</p> <p>(D) Prop Nut Kit P60-90 18-3781 \$51.95</p> <p>(D) Prop Spacer 60-F100 18-73978 \$4.50</p> <p>(E) Prop Nut Kit 115-250 hp. 18-3782 \$51.95</p> <p>(E) Thrust Washer 115-250 hp. 18-73918 \$42.95</p>
--	--	---	---

OUTBOARD SHOP MANUALS

Full of illustrations, photos and informative text and technical specs for disassembly and reassembly of outboard motors. Manuals for earlier years not listed are also available.

ALL MANUALS
\$50.95



John / Evin Outboard:

1 & 2 cyl. 1990-19951312
V Engines 1992-2001.....1311
All 2.5-250hp 2002-07.....1314

Mercury/Mariner Outboard:

All 2-Stroke Engines
2.5-275 hp. 1990-2000.....1416
2.5-250 hp. 2001-2005.....1418
All 4-stroke 2005-2011.....1422

Honda Outboard:

All Engines 1978-2001.....1200
All Engines, 2002-2008.....1202

Nissan/Tohatsu Outboard:

All 2.5-140hp1992-13..1500

Suzuki Outboard:

2-225 hp. 1988-2003.....1600
All 4 stroke 1996-07.....1602

Yamaha Outboard:

All 1997-2009.....1703
4 Stroke all 2.5-225 hp, inc.
jet drives 1995-2004...1705
All 4 stroke, 2005-10...1707

RADIOS AND ANTENNAS

VHF RADIOS

Uniden Atlantis275 Marine VHF Radio, light weight, waterproof . Includes flexible power supply with NiMH rechargeable battery, AC & DC charger, backlit LCD, dual & triple watch feature, 90 channels, memory scan, weather alert. 1/2.5/6 watt + Power Boost PTT Key. JIS7/IPX7 Submersible & waterproof standard. 10hr Battery life between charges.



Part No. ATLANTIS275 \$155.95

UNIDEN UM435

VHF Full featured Marine Radio, Quick comm. and microphone for one touch control from the speaker mic., Memory scan allows you to scan all channels in memory, weather alert, instant channel 16/9, 25/1 watt, JIS8 submersible. 12vdc. 3 Yr. warranty.



Part No. UM435 \$189.95

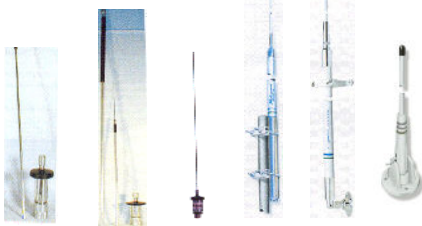
UNIDEN UM385, VHF Full featured Marine Radio.

- JIS4/CFR46 waterproof level
- Memory channel scan
- Triple watch feature
- Hi/Lo Power Switch
- S.A.M.E. Weather Alert
- Backlit Keypad and Display
- Channel Names
- DSC (Digital Selective Calling) capability including distress and individual calling
- DSC Position Send and Request



Part No. UM385 \$159.95

GAM & SHAKESPEARE VHF ANTENNAS



TG3 TG3SH SS2 399-1M 5399 420

420 , VHF Antenna: 5' Lift & lay mount.	\$218.95
399-1M , VHF Antenna, 2 sections, 9'6" , 6db gain, clamps to pipe	\$289.95
5399 , VHF Antenna, 2 sections, 9'6" , 6db gain, 1" threaded base, with 20' coax.	\$387.95
GAM TG3 VHF Antenna: 144-174 MHz 6dB gain, assembled length is 42"	\$199.95
GAM TG3SH VHF Antenna: 156-174 MHz 9db gain, assembled length is 96"	\$306.95
GAM TG5SH VHF Antenna: 156-174 MHz 12db gain, assembled length is 154" (3 sections- not shown)	\$389.95
GAM SS2 VHF Whip Antenna: 156 MHz marine band, 6db gain, Length is 35 inches	\$85.95

GAM ADAPTORS AND MOUNTS FOR ABOVE ANTENNAS

GAM adapter, adapts any TG Series antenna to a standard 1"-14 thread marine mount. Part No. MMA	\$ 42.95
GAM Mount for SS2 whip antenna. Part No. SSB	\$ 9.95

GAM SS2 Magnet mount, 90 lb magnet sticks to steel surface with 20' coax and connector (not shown), No. MAGKIT...\$54.95

Stainless Steel Ratchet mount , fits standard 1" antennas, heavy duty.
Part No. 329230-1 \$70.95



COAX

Coax cable to hook up radio to antenna with PL259 connectors. Use RG8X for VHF for runs less than 50'.
9' length. No. 98X.....\$17.95
18' length. No. 188X...\$24.95
50' length. No.508X...\$44.95



Coax barrel connector to connect two coaxes together. Part No. PL258.....\$3.95

PL258

POWER PACK CONVERTER



10 amp converter,

Converts 110vac input, to 12vdc output, 10 amp continuous, 14 amp surge, electronic switch mode. Will operate any VHF or CB radio, or other 12 loads up to 10 amps.

Part No. SEC1212UL.....\$149.95

Fuses

SOLD IN 5 PACK



AGC	ATC	ATM
\$3.25	\$4.25	\$5.50

AMPS	AGC	ATC	ATM
5	5210	56-3201	56-3212
7.5	5213	56-3202	56-3213
10	5215	56-3203	56-3214
15	5217	56-3204	56-3215
20	56-3235	56-3205	56-3216
25	5219	56-3206	56-3217
30	5220	56-3207	56-3218

ATM Assortment: 1ea. 2, 5, 7.5, 10, 15, 20, 25, 30.	No. 56-3210	\$7.95
ATC Assortment: 1ea. 5, 10, 15, 20, 25, 30.	No. 56-3200	\$9.86
AGC Assortment: 1ea. 1, 3, 5, 10, 15,	No. 5288	\$8.39

MARINE ENGINE PARTS

WHEN YOU CALL FOR MARINE ENGINE PARTS, PLEASE HAVE THE YEAR, MAKE, AND MODEL NUMBER ON HAND. WITHOUT THAT INFORMATION, IT IS ALMOST IMPOSSIBLE TO LOOK UP THE CORRECT PARTS FOR OUTBOARDS.

THE FOLLOWING OUTBOARD PARTS ARE AVAILABLE FOR MOST OUTBOARDS



WATER PUMP KITS
STARTER MOTORS
TRIM/TILT MOTORS
PISTONS
GASKETS
LOWER UNIT SEAL KITS
THERMOSTATS
FUEL FILTERS
CARB KITS AND FUEL PUMPS



UNIVERSAL INLINE FUEL FILTERS

Outboard Ultra View Fuel Filter

In line filter traps dirt and metal particles.
Visible filter allows for easy inspection.
element may be replaced, will not pass water.
1/4", 5/16", 3/8" barb fittings included
Part No. 33319-10.....\$16.95



Replacement elements 3 pk.
Part No. 33318-10.....\$9.95



In-line Disable fuel filters

trap dirt and other metallic particles.
The design allows for immediate inspection of your fuel condition with clear vial.
Filter for 3/8" hose, #33317-10...\$19.95
Filter for 5/16" hose, #33316-10...\$7.95



33317-10



33316-10

MARINE ELECTRICAL

Battery Selector Switch

These battery switches feature up to 300 Amp continuous rating for outboards and small gasoline or diesel engines.



P/N 6006.....\$123.95

This is a single circuit on/off battery switch. It will disconnect a single battery bank in emergencies, or when vessel is not in use.

P/N 6007.....\$49.95

This will switch isolated battery bank to all loads or combines battery bank to all loads.

Battery Cables

All cables are 2 gauge size

BC88543.....4 ft.... Red.....\$38.95

BC88553.....4 ft.... Black.....\$38.95

BC88563.....6 ft.... Red.....\$42.95

BC88573.....6 ft....Black.....\$42.95



Battery Terminals.....\$11.95

lead 3/8" stud

Part No. 415210-1 (pair)



Battery Terminal Covers...\$6.95

Part No. 415100 (Pair)

Red and Black

Fits a 4,2 or 1 gauge cable



Battery Box and Lid

Poly plastic box is water tight and impervious to battery acid. Includes hold down strap.

14"x 10-3/4" No. 9065-1

\$12.95

17"x 11" No. 9067-1

\$17.95

18-3/4" x 11" No. 9084-1

\$22.95



Part No. MP39070 \$49.95

Brass Ignition Switch

4 position Acc-Off-Run-Start

Universal

4 screw terminal



Part No. MP39760 \$28.95

Plastic Ignition Switch

3 position Off-Run-Start

Push to choke

Short 5/8 in. max panel thickness

6 screw terminal

OMC Replacement 393301/508180



Part No. MP51020 \$128.95

Ignition Switch

Yamaha Control Box 2 & 4 stroke

Replaces: 703-82510-12-00

Colors on wires match factory codes



Part No. MP51090 \$58.95

Ignition Switch

3 position Off-Run-Start

Push to choke

Replaces: Mercury 87-17009A5



Part No. MP52000 \$67.95

Ignition Switch

3 position magneto Off-Run-Start

Push to choke

Replaces: Mercury 87-88107A5



Part No. MP51040 \$166.95

Ignition Switch

Yamaha Control Box 2 & 4 stroke

Push to choke

Replaces: 703-82510-43-10

Colors on wires match factory codes



Part No. 420350-1 \$26.95

Universal

Brass Ignition Switch

3 position Off-Run-Start

3 screw terminal

Long 1 1/8 in. panel thickness



4 position Acc-Off-Run-Start

Outboard without battery

Push to Choke

7 screw terminals

7/8 in. hole

Short 5/8 in. panel thickness

Part No. MP39090 \$58.95



Part No. MP41010 \$34.95

3 position magneto-Off-Run-Start

Push to choke

6 screw terminal

Long 1 1/8 in panel thickness



Part No. MP39010 \$25.95

Brass Ignition Switch

2 position universal

Off-Run (Start with separate starter button)

2 terminals

3/4 in hole

Short 5/8 in. Panel thickness

BILGE PUMPS & ACCESSORIES

Fiberglass Repair Kits

Smaller kit contains 8 oz. resin with hardener, 3 sq. ft. of fiberglass cloth.

Part No. 637.....\$32.95



Marine Tex



Instant boat repairs possible on wood, aluminum or fiberglass. Available in 3 sizes.

Two-part epoxy adhesive, Non-Magnetic, Non Rusting, Non-Corrosive. Bonds permanently to metal, plastic, wood, tile and concrete. Remains flexible and can be sawed, drilled, and sanded, with-stands temps -60 to 300°, grey or white color .

- 2 oz. White Rapid Set 3018C.....\$15.95
- 2 oz. Gray 3001C / White 3011C.....\$17.95
- 14 oz. Gray 3003C / White 3013C.....\$52.95
- 1 qt. Gray 3005C / White 3015C.....\$142.95

JB WaterWeld

The J-B Weld Co. 2 oz. WaterWeld Epoxy Stick helps make repairs in moist applications and underwater applications. This epoxy adheres to a variety of surfaces including fiberglass, PVC plastic, copper, iron and aluminum.

Helps to make repairs in moist applications and underwater applications

Adheres to a variety of surfaces including fiberglass, PVC plastic, copper, iron and aluminum

Can be drilled, sanded, filed, tapped, machined and painted

For general-purpose repair
Cures in 60 minutes

JB8277.....\$9.95



Hand Pumps

Hand pump is 24" long with 24" of hose attached, 8 gals/min.

Part No. 224PF \$37.95

24" Floatplane pontoon pump, with special "foot" to fit pontoons.

Part No. 324FPX \$47.95



Bilge Pumps



ATTWOOD Automatic bilge pumps, will automatically remove water without a float switch. 36" wire leads. Use switch #45 for auto/manual operation. 12vdc. 500 GPH, 3/4" out, No. 4505-7.....\$69.95 1100 GPH, 1-1/8", No. 4511-7.....\$119.95

ATTWOOD Tsunami manual bilge pumps, deliver high output, high quality bearings, brushes and magnets. 12vdc.

500 GPH pump 3/4", no. 4606-7.....\$25.95

800 GPH pump 3/4", no. 4608-7.....\$40.95

1200 GPH pump 1-1/8", no. 4612-7.....\$53.95



RULE Manually switched 12vdc. pump, 360 Gallon per hour, 3/4" out, No. 24.....\$24.95 500 Gallon per hour, 3/4" out, No. 25D.....\$37.95 1100 GPH pump 1-1/8" out, No. 27D.....\$54.95

RULE Automatic bilge pump 12vdc., 1-1/8" outlet, 1100 GPH, No. 27S.....\$129.95



Bilge Hose Connectors

Thru hull connection for bilge hose 90 degree or straight in 3/4" or 1-1/8" size.

90 degree fittings:

3/4" Part No. 3877-3.....\$9.95

1-1/8" Part No. 3879-3.....\$16.95

Straight fitting:

3/4" Part No. 3873-3.....\$5.95

1-1/8" Part No. 3874-3.....\$9.95



Bilge Hose (white only)

3/4" , per foot, No. 120034.....\$1.25

1-1/8", per foot, No. 120118.....\$1.35

6' 1 1/8" No.1151-1.....\$14.95

3/4" w/clamps 5' No.4199-7.....\$12.95



Bilge pump switch, 3 way switch for, automatic, auto-off-manual and manual bilge pumps.



Lighted 3-way switch with 20 amp fuse.. No. 41\$34.95 (shown left)

Bilge pump switch, ON-OFF for manual pumps. Part No. 49.....\$30.95



Auto Bilge pump switch, ON-OFF-AUTO for automatic pumps. Part No. 45.....\$31.95



Drain Plugs

Two styles, flip handle or "T" twist handle

\$3.95 ea.



520070



520080

LIFE JACKETS / SAFTEY

FLOTATION VESTS AND CUSHIONS

General Purpose Adult / Youth Vests

Durable foam flotation nylon vests with front and back straps, quick release buckles, fully adjustable. Blue & Red colors with black straps.

Adult chest sizes:

L, 30-52", XL, 50-60"

Youth sizes: 50-90 lbs.

Child sizes: 30-50 lbs

Adult:

Lg. Blue No. 40201UNV \$26.95

Lg. Red No. 40202UNV \$26.95

XL Red No. 40202OS \$26.95

XL Blue No. 40402LXL \$26.95

Youth:

Blue No. 40201YTH \$21.95

Red No. 40202YTH \$21.95

Child:

Blue No.40201CLD \$21.95

Red No.40202CLD \$21.95



Multi Sport Life Vests USCG type III

OMEGA Multi-Sport, designed for comfort, this vest is light weight and durable, 1" adjustable straps adjust for snug fit and complete mobility.

Child, chest 20-25", 30-50 lbs. \$26.95

BLUE 40301CLD, RED: 40302CLD, YELLOW: 40303CLD

Youth, chest 25-29", 50-90 lbs. \$26.95

BLUE 40301YTH, RED: 40302YTH, YELLOW: 40303YTH

Universal Adult, chest 30-52", 90 lbs. and over \$26.95

BLUE 40301UNV, RED: 40302UNV, YELLOW: 40303UNV

Oversize Adult, 50-60", 90 lbs. and over \$26.95

BLUE 40301OS, RED: 40302OS, YELLOW: 40303OS

Infants Head-Up Vest

For a child less than 30 lbs. with adjustable waist belt, leg strap, and zipper front closure. Rounded flotation collar with grab strap.

Red, No. 40202INF \$21.95

Blue, No. 40201INF \$21.95



Throw able Seat Cushion

Type IV throwable seat cushion.

Not to be worn or used in place of life jackets. Nylon outer shell, foam flotation.

Colors: BLU=blue, RED=red,

WHI=white, ORG=orange

Part No. 6500(color) \$17.95



Attwood portable LED battery operated nav light kit for smaller boats, disassembles for easy storage, water and shock resistant with rubber bootied switches and rubber seals, batteries not included. Part No 14180-7.....\$47.95

Mini Compact Horn



Stainless steel cover, Meets ABYC standard A-23 for use on boats under 39', rated at 110db at one meter. Part No. 431110-1.....\$34.95

Ritchie Sport Compass

The ideal compass for small boats, ATV's and snowmobiles. Reversible bracket mount, jewel and hardened steel pivot movement, extended temperature range, built in compensators, 1-7/8" direct reading dial, built in night lighting, rugged compact style.

Part No. C100.....\$51.95



First Aid Kits

Contains supplies necessary for emergency first aid. Shatterproof and Watertight Gusseted case.

First aid kit size, part numbers and prices:

158 pc. Cruiser Kit Part# 965-1.....\$59.95

74 pc. Fish 'N Ski Part# 963.....\$97.95

38 pc. Runabout Part# 962.....\$14.95



963



FISH CREEK SALES: 1-800-446-2611, www.fishcreek.biz

REMOTE STEERING



Teleflex Quick Connect. Rotary system, quick response, 3.8 turns lock to lock, standard 3/4" tapered steering shaft. Good choice for outboard applications where stability and flutter are not a problem. Complete Steering System: Includes helm, cable, and 90° bezel. Available in 1 – ft. increments from 8–20 ft. * Bolt-in replacement for Morse, Teleflex, OEM and other steering systems with no new holes to drill.

* Quality cable with stainless output ends.

* Quick and easy to install.

* Wheel included

Part No. SS137–(Lgth. 8–20') Note: this item is being discontinued and will be replaced by the comparable Teleflex brand system.

\$269.95

Order wheel separately

Teleflex No Feedback Steering System

No Feedback Steering System, 4.2 turns lock to lock, the no feed back system buffers steering loads. Uses Uflex Quick Connect cable, standard 3/4" taper steering shaft and minimal clutch play. Complete Steering System: Includes helm, cable, and 90° bezel. Available in 1 – ft. increments from 10–20 ft. Wheel not included. Order steering wheel separately below.

Bolt-in replacement for Morse, Teleflex, Uflex, OEM and other steering systems with no new holes to drill.

* Quality cable with stainless output ends.

* Quick and easy to install.

Part No. SS147–(lgth. 12') 4.2 turns

Other lengths add/subtract \$3.00 per foot

Order Wheel
Separately

\$439.95



Teleflex Baystar Hydraulic Steering System

BayStar allows you to install all of the safety, reliability and comfort of hydraulic steering onto your boats rated up to MAX. 150HP as rated by the engine manufacturer. Combine this with the superior SeaStar Solutions design team, rigid ISO quality control and teamed with the finest materials and precision manufacturing—BayStar continues the tradition bringing comfort and safety to boating.

BayStar is NOT recommended in applications with high steering effort (i.e. such as those using high performance engines or boats capable of attaining high speeds), customers should consider upgrading the system to SeaStar/SeaStar Pro steering. This will reduce the steering effort due to the fact that SeaStar steering provides more output power resulting in lower steering effort

Features

- Patented No FeedBack™ Steering lock valves.
- 5 turns lock-to-lock.
- Up to 150 horsepower (total).
- Available either as separate components or as a complete system ready to install.
- Fixed cylinder.
- BayStar hydraulic tubing cut to suit application.
- Tilt option available.
- Requires 3" (76mm) cut-out hole in dash.
- Requires 21" (534mm) splashwell width.

Includes two lgths. of 20' tubing, two bottles of hydraulic steering fluid and one fill tube for easy fill and purge

Baystar Steering System Kit, Part No. HK4200A.....**\$929.95**

SeaStar Steering System Kit, Part No. HK6400A.....**\$1420.95**

Replacement Helms

Precision machined drive gear for positive cable motion, heavy duty casting for strength and rigidity.

TELEFLEX Replacement
No Feedback Helm,
Part No. SH5150P..\$169.95



UFLEX Replacement Safe-TQC Helm,
Part No. T71FC.....\$98.95
TELEFLEX Replacement Helm,
Part No. SH5094P.....\$94.95

How to Measure For Replacement Steering Cable



"B" dimension + 23" = Order Length nearest foot.
Fits all Morse, Teleflex, and Uflex rotary helms
including non-feedback versions. Order in 1 foot
lengths, 6 to 20 ft.

Part No. SSC61(feet) 12 ft. cable.....\$169.95

Add/subtract per foot for other lengths \$1.50

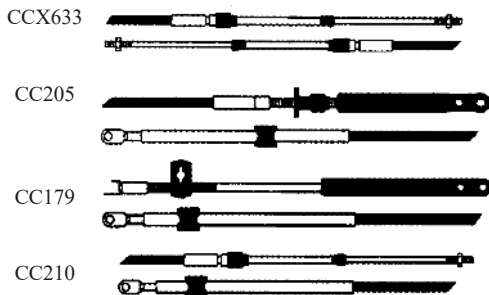
Steering Wheels

13" Black, constructed
of one-piece PVC for
durability, standard
taper. (May look
different than picture)
Part No. V32N.....\$53.95



CONTROLS

Replacement Throttle & Shift Control Cables



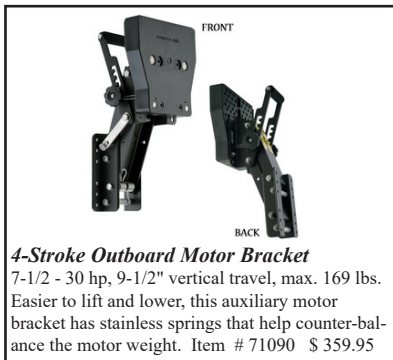
PART NUMBER	CABLE TYPE	PRICE EACH
CCX633--(FEET)	3300 EXTREME, heavy duty high efficiency cable, Add/subtract per foot for other lengths	12 ft. price \$49.95
CC205--(FEET)	Type 479 cable, Fits OMC control boxes	12 ft. price \$42.95
CCX179--(FEET)	Type 600A Cable, Fits Merc./ Mercruiser control boxes	12 ft. price \$69.95

THROTTLE AND SHIFT CABLE ORDERING INFORMATION:

Order length to nearest foot. If you need 12' cable, last 2 digits of part number would be 12. Example: For Yamaha, 12' length, use # 3300 cable, part number CC172-12. When designing new installations add 2 feet for motor swing.

OMC, Johnson, Evinrude 1979 to present use: CC205--(length)
 Mercury / Mercruiser & '93+ Mariner use: CCX179--(length)
 Honda, Yamaha, Tohatsu, Nissan & Suzuki use: CC172 standard
 or for greater efficiency or longer runs: CC633 EXTREME--(length)
 Call for availability on cables for pre '93 Mariner using Merc controls

Teleflex
marine



4-Stroke Outboard Motor Bracket

7-1/2 - 30 hp, 9-1/2" vertical travel, max. 169 lbs.

Easier to lift and lower, this auxiliary motor bracket has stainless springs that help counter-balance the motor weight. Item # 71090 \$ 359.95

SKEGGARD™
by aqua power



\$119.95 for most outboards

Repairs broken skegs and protects new skegs, slips over original skeg or stub of broken skeg and installs in minutes by bolting on. Made from stainless steel. Helps prevent propeller and lower unit damage and costly repairs. Drilling required. Mounting Hardware included.

CALL WITH MAKE AND
MODEL OF OUTBOARD
FOR MOST ACCURATE
PRICING AND AVAIL-
ABILITY

FISH CREEK SALES: 1-800-446-2611, www.fishcreek.biz

ROPE AND ANCHORS

Dan forth Style Anchor, SEADOG LINE anchors have solid steel shank with strong and wide steel flukes. Hot dipped galvanized coating for long lasting protection. Reliable, popular, standard duty anchor. The ST model 30 lb. anchor is high tensile strength steel for severe heavy duty use.

#5 anchor	No. 317005	\$39.95	#14 anchor	No. 317014	\$59.95
#9 anchor	No. 317008	\$36.95	#6 anchor	No. 317018	\$87.12
#ST30 anchor	No. 317130	\$119.95			

DANFORTH HIGH STRENGTH STEEL ANCHORS ARE AVAILABEL UPON REQUEST

Seadog Claw Anchors

Weight	Order no.	Price
11 lbs.	318505	\$62.95
16.5 lbs.	318507	\$88.95
22 lbs.	318510	\$112.95
33 lbs.	318515	\$145.95

RIVER ANCHOR

30 LB. BLACK VINYL COATED
No. 85950.... \$73.95

Bulk Twisted Nylon Rope

Part	Size	Price Each	Part	Size	Price Each
70690	3/8" x 50'	\$ 26.95	70693	1/2" x 100'	\$ 59.95
70691	3/8" x 100'	\$ 42.95	70696	1/2" x 200'	\$129.95
70692	3/8" x 150'	\$ 56.95			
NYL146	1/4" x 600'	\$ 82.95	NYL386	3/8" x 600'	\$183.95
NYL126	1/2" x 600'	\$299.95	NYL346	3/4" x 600'	\$549.95

Premium Twisted Nylon Anchor / Dock Rope

PACKAGED WITH LOOP BRAIDED INTO ONE END

73285	3/8" x 15'	\$ 9.95
73286	3/8" x 20'	\$15.95
73297	1/2" x 15'	\$13.95

Bulk 3-Strand Poly Rope

PR146	1/4" x 600'	\$44.95	PR1412	1/4" x 1200'	\$84.95
PR5166	5/16" x 600'	\$54.95	PR51612	5/16" x 1200'	\$99.95
PR386	3/8" x 600'	\$69.95	PR3812	3/8" x 1200'	\$135.95
PR126	1/2" x 600'	\$119.95	PR1212	1/2" x 1200'	\$229.95

Anchor Hardware

Stainless Snap Hook



Steel Scissor Hook



Steel Quick Link



Galvanized Shackle



DESCRIPTION					Part No.	Price
Stain. Snap Hook	3/8"	4"	9/16"	5/8"	151100-1	\$27.95
Galvanized Snap Hook	3/8"	4"	9/16"	5/8"	50575	3.95
Steel Scissor Hook	1/2"	3-1/8"	9/16"		155640-1	2.95
Steel Quick Link	3/16"	2"	1/2"	1/4"	158005-1	2.25
	5/16"	2-15/16"	11/16"	3/8"	158008-1	2.75
Galvanized Shackle	5/16"	3/8"	3/4 ton capacity		147608	3.95
	3/8"	7/16"	1 ton capacity		147610	4.25

MARINE ACCESSORIES

Oars, Paddles and Boathooks

Oars

Wood Oars are lightweight, economical, come with power grip. Sold each.

5' Oar. Part No. BWSU 50.....	\$41.95
5'5" Oar. Part No. BWSU 55.....	\$45.95
6' Oar. Part No. BWSU 60.....	\$52.95
7' Oar. Part No. BWSU 70.....	\$61.95
7'6" Oar. Part No. BWSU 75.....	\$65.95

Boat hook

Telescoping with twist lock, 3 1/2' x 8', 3 section. Part No. 72377.....\$36.95



TEMPRESS ALL WEATHER BOAT SEATS

The Tempress All-Weather Quick Disconnect Seat Shell has been a durable standard for over 25 years. With its bullet proof design and heavy duty construction, these seats might even outlast your boat. Not just durable, but comfortable and functional as well, the Tempress All-Weather seat features a double contoured seat pan that eliminates pressure points. Stainless Steel hinge pins secure the fold down back and included proprietary Quick Disconnect Mount provides for even more functionality. The QD mount allows the seat to swivel on a low profile corrosion proof disk, and can also be removed for storage or to be used in another location in the boat.



Tempress quick disconnect seat - no cushion
Gray, P/N 45133...\$109.95



Tempress quick disconnect seat - with cushion
Gray, P/N 45153...\$159.95

The Tempress Quick Disconnect Mounting Kit, replacement or add to your own seat.
Gray, P/N 45933...\$28.95



Replacement Quick Disconnect Mount only. Hardware not included.
Gray, #45833...\$23.95



Paddles

Laminated wood, light weight paddle.

4' Paddle BP 40.....	\$24.95
4'5" Paddle BP 45.....	\$26.95
5' Paddle BP 50.....	\$34.95
5'6" Synthetic Paddle BPS55.....	\$28.27

Oar Locks

Heavy Duty clamp on oar locks, use these if you do ALOT of rowing.

1/2" Shank G807.....	\$19.95
9/16" Shank G808.....	\$19.95



Pin-Type Horn Oarlocks

2"x 1/4" shank, #747212, pr. \$18.95

Round Horn Oarlocks

2-3/16" id. Galvanized, #580871, pr. \$11.9

Hydrofoil Stabilizer

Eliminates bow rise, porpoising and bouncing. Significantly improves planing time, top speed, handling and safety., cutting fuel costs. One size fits all, mounts easily on cavitation plates of outboards and out drives from 25 to 365 hp.

2-piece Doel Fin,

Part No. 193B.....\$40.00



Sting Ray, 1-piece unit Part No. SRXPI-1.....\$72.95

SEAT MOUNTING

SEAT SWIVEL

Standard bolt pattern 7" sq.
Part No. 86790.....\$18.95



CLAMP ON SEAT BRACKET

Clamps to bench type seat, with swivel, Part No. 85693, \$44.95

Adjustable Post With 10" Round Base Seat Mount. Rotates 360°, Easy Grip Handles. Fits Standard Boat Seats. Corrosion Resistant Powder Coat Finish, with swivel.
Part No. 1440248.....\$84.95



Seat pedestal available in two heights, 7" or 13". Standard bolt pattern will accept swivel above.
7" No. 065409.....\$22.95
13" No. 065623.....\$25.95



FUEL TANKS & FITTINGS

MOELLER Plastic Fuel Tanks

Plastic fuel tanks are made of marine-grade, high density polyethylene with ultraviolet inhibitors. Easy to carry and will not corrode. Fuel connector, (not included, order below). A reserve fuel area is designed right into the tank by means of a partitioned bottom. When the gauge registers empty just tilt the tank and the reserve fuel becomes usable.



3 Gal. LO-PERM Tank,
620003LP \$76.95



6 Gal. LO-PERM Tank,
620049LP \$87.95



12 Gal. LO-PERM Tank (Low
Profile) 630013LP \$139.95



20 Gal. Tank,
31620 \$309.95



12 Gal. LO-PERM Tank (Tall
Profile) 630012LP \$139.95

Replacement Cap for
3-12 gal. tanks, 621501
\$15.95



Replacement Gauge/
Cap for 20-26 gal. tank,
12-1/4" long.
454002 \$44.95



Fuel Line Assemblies and Connectors

TANK END FITTINGS

FUEL LINE ASSEMBLY

ENGINE CONNECTORS



Mercury 1998 and newer, Fuel line assembly, 3/8" x 80" long, Part No. 34385-10LP, \$64.95

Tank Fitting 33477-10...\$9.95, Hose Fitting, tank end: 33486-10...\$8.95, Hose Fitting, motor end: 33482-10...\$7.95



Mercury, Fuel line assembly, 3/8" x 80" long, plastic fittings, Part No. 34392-10, \$64.95

Tank Fitting 33419-10...\$15.95, Hose Fitting, tank end: 33421-10...\$13.95, Hose Fitting, motor end: 33418-10...\$15.95



Mercury / Mariner (make up from universal hose 34390-10LP and order the fittings and clamps necessary)

Tank Fitting 33419-10...\$15.95, Hose Fitting, tank end: 33421-10...\$13.95, Hose Fitting, motor end: 33482-10...\$7.95



Johnson / Evinrude (OMC/BRP) Fuel line assembly, 3/8" x 80" long, Part No. 34391-10LP, \$64.95

Tank Fitting 33400-10...\$8.95, Hose Fitting, tank end: 33480-10...\$5.95, Hose Fitting, motor end: 33480-10...\$5.95



Yamaha Fuel line assembly, 3/8" x 80" long, Part No. 34394-10LP, \$64.95

Tank Fitting 33470-10...\$9.95, Hose Fitting, tank end: 33481-10...\$7.95, Hose Fitting, motor end: 33481-10...\$7.95

Universal, 3/8" x 80" long, Part No. 34390-10LP, \$64.95

Make up your own fuel line to match the existing tank and motor fittings. Use this option for Honda, Suzuki, Nissan & Tohatsu



A. B.

C.

A. Honda, tank fitting, Part No. 33501-10

\$14.95

B. Honda, hose-tank end, Part No. 33502-10

\$17.95

C. Honda, hose-motor end (square hole) 33497-10

\$ 8.95

A. Suzuki, tank fitting, Part No. 33503-10

\$10.95

B. Suzuki, hose ends, Part No. 33487-10

\$16.95

A. Nissan / Tohatsu, tank fitting, Part No. 33491-10

\$13.95

B. Nissan / Tohatsu, hose ends, Part No. 33492-10

\$16.95

A. Chrysler / Force, tank fitting, Part No. 33461-10

\$ 9.95

B. Chrysler / Force, hose, Part No. 33488-10

\$14.95

OUTBOARD FUEL FILTERING



RACOR IN LINE GAS FUEL FILTERS

This series features a high capacity Aquabloc®II filter element that removes sediment down to 10 micron and 99% of water. This Spin-On filter design is simple to replace and the reusable clear plastic or metal contaminant collection bowls feature a self-venting drain, or metal plug, for removing unwanted muck and water.

Model 025-02, In line unit, 25 gph for smaller outboards. Water block 10 micron filter element won't pass water, clear see thru bowl, replaceable filter unit.

Part No. 025-RAC-02.....\$138.95
Aqua block 10 micron replacement element.

Part No.S25-02\$41.95



S25-02

Model 320R-01, 60 GPH with 5 -1/4" ports and larger capacity. Water block 10 micron filter element. Large capacity recommended for large motors and dual setups.

Part No. 320R-RAC-01.....\$147.95

Replacement element , No. S3227.....\$31.95

In-line Disposable fuel filters trap dirt and other metallic particles.

The design allows for immediate inspection of your fuel condition with clear vial.

Filter for 3/8" hose, #33317-10...\$19.95

Filter for 5/16"hose, #33316-10...\$7.95



S3227



Don't forget to order clamps and connection fittings below!

Model 120R-01, 30 GPH has 3 port head with 1/4" NPT tapered pipe threads, white epoxy coating, see thru bowl and 10 micron filter element, for outboard use.

No. 120R-RAC-01.....\$132.95

120R-01 Replacement 10 micron element S3240.....\$25.95



S3240

Replacement See Thru Bowl for Racor 120R and 320R.

For 120R, RK10222.....\$56.95

For 320R, RK30475.....\$63.95



Outboard Ultra View Fuel Filter

In line filter traps dirt and metal particles. Visible filter allows for easy inspection. element may be replaced, will not pass water.

1/4", 5/16", 3/8" barb fittings included

Part No. 33319-10.....\$16.37

Replacement elements 3 pk.

Part No. 33318-10.....\$9.95



FUEL FITTINGS, HOSE AND CLAMPS

Brass 3/8" hose to 1/4" pipe adapter.

No. 33405-10.....\$4.95



Brass 1/4" pipe 90 degree EL

No. 33436-10.....\$7.95



Brass 3/8" Barb, 1/4" NPT Female

No. 33478-10.....\$6.95



Hose mender brass barb splice w/2 clamps

1/4"x1/4" No. 33211-10.....\$6.50

5/16" x 5/16" No. 33212-10.....\$6.95

3/8" x 3/8" No. 33213-10.....\$6.95



Anti Siphon Valve, convenient hose barb design, aluminum with 1/4" NPT threads.

1/4" NPT x 1/4" barb, # 33801-10.....\$15.95

3/8" NPT x 3/8" barb, # 33802-10.....\$15.95



Bulk Fuel Hose, rubber covered,

braided USCG Marnie fuel line. 5/16" & 3/8" id.

5/16" id. PER FT. No. 337056.\$2.50

5/16" id. 50 Ft Roll No. 337056-50...\$119.95

3/8" id. PER FT. 337038.\$2.95

3/8" id. 50 Ft Roll No. 337038-50...\$119.95



LO-PERM Primer Bulbs \$39.95

3/8" id. hose.....\$4590-10LP

1/4" id. hose.....\$4790-10LP

5/16" id. hose.....\$4690-10LP



Brass Fuel Valves

All valves are brass and have

1/4" NPT openings.



Shut Off Valve
33300-10 \$36.95



3-Way Valve
33302-10 \$34.95



4-Way Valve
33304-10 \$38.95

SOLAS OUTBOARD PROPELLERS

AMITA 3 ALUMINUM PROPS

Exclusive squeeze cast process
Stronger blades with better performance
Outstanding acceleration and top speed

**STARTING AT \$153.95. CALL WITH
MODEL OF OUTBOARD FOR SPECIFIC
PRICING**



SATURN STAINLESS STEEL



**STARTING AT \$299.95. CALL WITH
MODEL OF OUTBOARD FOR SPECIFIC
PRICING. 4 BLADE STAINLESS STEEL
IS ALSO AVAILABLE FOR A HIGHER
PRICE**

- The Solas New Saturn stainless steel propeller offers good acceleration
- These props include a traditional rubber hub
- Smaller pitch sizes offered in extra large diameter with increased blade area
- Large ear design is ideal for pontoons, commercial hulls, and heavy loads
- SOLAS Stainless Steel propellers lead the industry in the highest percentage of chromium, nickel, and molybdenum & are made by investment casting process that resists rust from salt water and increases the stability of the propeller blades

AMITA 4 BLADE ALUMINUM

- Wide blade design
- Outstanding acceleration and top speed
- Exclusive Solas squeeze cast propeller is almost non-porous and is stronger than traditional die cast products
- 4 superior coatings of paint that will ensure excellent anit-corrosion performance
- Long lasting Solas Propellers have been tested for more than 500 hours in salt water



**STARTING AT \$163.95. CALL WITH
MODEL OF OUTBOARD FOR SPECIFIC
PRICING**

ACCESSORIES



Powered by 2D batteries(batteries sold sperately) the tera pump is able to pump 2.5 gallons per hour and is safe to use gasoline, diesel, antifreeze and many other liquids
Part number-TEREP01-\$55.95

High quality US made extension cords offered in three diffierant sizes
15FT-USW97015-\$19.95
25FT-USW97025-\$24.95
50FT-USW97050-\$39.95
100FT-USW97100-\$59.95



Coleman 2 burner propane stove



Gas Jug Spout



Self venting Gas Jug Spout - old stlye. Hate those new "non-spill" spouts? Here is the remedy. Also replacement cap for the spout.

Spout, No. 451-3980...\$13.95
Cap, No. 451-3989..... \$7.95



- Over 20k BTUs in minutes
- Room to fit a 12in and 10in pan Simultaneously
- Side panels adjust to fit larger pans

Part No-20234 \$98.00

DELUX TOOL POUCH

- Made from heavy duty Cordura TM nylon
- 6 pockets for pliers, screw drivers, etc.
- Zipperes compartment for smaller sockets, bolts, spark plug, etc.
- Velcro closure keeps pouch rolled up
- Pictured tools not included

Part no. 12-1858....\$22.95



CRUZ TOOLS ECONOKIT M1

The EconoKIT M1 allows a major upgrade in both quality and content over OEM kits, yet at a very reasonable price. Four combination wrenches, and eight-inch adjustable wrench, locking pliers, and much more permit a wide range of operations. The pouch is designed to last for the long haul. Comprehensive and capable.

Part no. EKM1.....\$79.95

ECONOMY TOOL KIT

- 5" slipjoint pliers
- 3 open end wrenches, 8x10mm, 10x12mm, 14x17mm)
- Spark plug wrench (21x24mm)
- Screwdriver set (#2 and #3 Phillips, Flat Driver)
- Plastic carrying pouch

Part no. 12-1867....\$33.95



MARINE OIL & LUBRICATION

A NOTE ABOUT AMSOIL AND YOUR WARRANTY:

AMSOIL synthetic technology protects hot, high-revving engines against wear. AMSOIL Synthetic ATV/UTV/MARINE & SNOWMOBILE Motor Oil is Warranty Secure™ and will not void your ATV or UTV warranty. It is a cost-effective, high-performance alternative to original equipment manufacturer (OEM) fluids.

**PER POSTAL REGULATIONS
WE CAN SHIP 12 QTS PER PARCEL ONLY.**

Outboard Oil Filters

Located on page 36

10 oz Grease Tubes:

Corrosion Control and Trailer Bearing Grease, Special water insoluble formula for marine applications, excellent protection against salt water, salt air and chemicals. Use for all marine use. 8 oz. tube. Part No.11406\$10.95



AMSOIL HP Synthetic 2-Cycle Oil

BIA and NMMA (TC-W3) certified. Exceeds all engine manufacturers' warranty requirements. Developed specifically for outboard, burns very clean with no carbon deposits, highly recommended. For mix or injection.

Quart, No. HPM-QT.....\$ 13.99

Power Trim & Tilt Fluid

Formulated to provide viscosity and lubrication to ensure proper pump and seal performance in power tilt & trim units. 10 oz. tube, Part no. 11578.....\$8.95



AMSOIL SABER SYNTHETIC OUTBOARD

Designed for pre-mix applications as lean as 100:1 ratios or richer. Improves throttle response and lowers or eliminates smoke. Minimizes deposit formation and lowers emissions. Performance emphasis on the cooler operations of water-cooled motors. Quart, No. ATO-QT...\$13.50



10 oz. tube,
Part no. 11540.....\$8.95
Quart (32 oz.) size Gear Lube,
Part no. 11552.....\$13.95
Hypoid Gear Lube, Qt.
Part No. 11556.....\$13.95



AMSOIL WCF Marine Synthetic 4-Cycle Motor Oil

For use in 4-stroke gasoline fueled engines in marine applications. Offers unsurpassed wear protection, viscosity stability, low volatility and excellent rust protection. NMMA FC-W approved and "warranty certified". For use in 4-stroke outboard and marine inboard engines. Also excellent for personal watercraft. Quart, 10W-30, No. WCT-QT.....\$15.95
10W-40, No. WCF-QT.....\$15.95



Lower Unit Lube Pump

Quart Pump Kit, Convenient, no-mess way to pump lube into your lower unit. Works with quart size gear lube (above) Includes fitting for Johnson, Evinrude, Mercury and Mariner. Order metric adaptors below. Part no. 55-005.....\$17.95



Metric adaptors:

Yam, Hon, Nis & Tohtsu adaptor
Part no. 55-012.....\$7.95

Suzuki Adaptor, no. 55-013...\$14.95



AMSOIL Synthetic gear lube

True marine gear performance. Provides superior protection from shock loading. Resists foam and retains extreme-pressure qualities even when subjected to 10% water contamination. For use in outboard lower units, sterndrives, V-drives, bow and tunnel thrusters and marine transmissions Part No. AGM-QT....\$13.95



PUMP FOR AMSOIL BOTTLES Lube not included

Includes adaptors, G2039.....\$15.95



13 oz. Tube No. AGM-TB....\$12.95

OILS AND FLUIDS

2-STROKE OILS

Klotz TC-W3 Synthetic 2 cycle Oil



Oil injection or premix. Exceeds all snowmobile manufacturers warranty requirements. Smokeless environmentally safe formula with clean burning characteristics

32oz 842-0070 \$18.95



DOMINATOR

Premium racing 2-cyc oil designed for high horsepower and modified racing or trail motors. Injector or 50:1 premix.

Part No. TDR-QT.....\$16.95



INTERCEPTOR

High performance 2-cycle oil designed with emphasis on exhaust power valves. Excellent for all types snowmobiles. High quality replacement for manufacturer branded oils. Injector or 50:1 pre mix.

Part No. AIT-QT\$17.95



AMSOIL Synthetic ATV/UTV Transmission & Differential Fluid is engineered to deliver upgraded performance for hard-working and performance ATVs and UTVs.
Part No. AUDT.....\$13.95

ATV/UTV 4-STROKE MOTOR OILS

AMSOIL Synthetic ATV/UTV motor oil (AUV) is formulated to deliver upgraded performance for hard working and performance ATVs and UTVs. Its outstanding severe service formulation allows riders to confidently and safely push their machines to the limit, whether tackling tough chores around their property or riding aggressively on the trail.

AFF oil is formulated specifically for motorcycle/ATV engines and extreme cold weather. with MPZ additive, allows engines to start at -40° with excellent wear protection. Meets or exceeds API/SH & CCMC



0W-40 ATV / SNOWMACHINE
Part No. AFF-QT\$17.95

5W-50 ATV/UTV
NO. AUV50.....\$16.95

10W-40 ATV/UTV
NO. AUV40-QT.....\$16.95

Chain case and Gear Lube

AMSOIL SYNTHETIC CHAIN CASE LUBE
Special formula reduces wear in snowmobile chain cases and ATV differentials, etc. 16 oz.
Sh. wt. 1 lb. Part no. TCC-CN.....\$11.95



AMSOIL 75W-90 Long Life Gear Lube
Provides long life in passenger cars and trucks. Excellent all season summer and winter performance. Outperforms all conventional gear oils, Qt.
Part No. FGR-QT.....\$15.95



WWW.FISHCREEK.BIZ 800-446-2611
Follow us on Facebook for deals and new products

FUEL HANDLING

Fuel Pumps

Hand fuel pump, self priming piston. Fits in standard 2" bung. Easy to use with anti siphon feature, Telescoping suction pipe fits in 15 to 55 gal. drums, 8' hose included. Sh. Wt. 14 lbs.

Part No. FR152.....\$269.95



12 Volt Electric Fuel Pump

12 v.d.c. electric fuel pump, uses car battery, with 12 ft. hose, 1/4 hp. Motor, manual nozzle, 22"-40" telescoping suction pipe. Wt. 36 lbs.

Part No. FR1210C.....\$449.95



12 Volt Electric Fuel Pump

110 v. ac electric fuel pump. Explosion proof UL listed 1/3 HP motor (115 VAC-60Hz) with sealed bearings, Heavy Duty switch, thermal overload protection and junction box. Easy removable strainer, automatic bypass valve, 2 in. threaded bung for tank openings with 12" hose and manual nozzle. Does not include wiring or 1" suction stand pipe. 18 GPM capacity. wt. 47 lbs.

Part No. FR700.....\$799.99



Telescoping Aluminum suction tube, 1" x 35" long enough for 55 gal drum use with FR700 if using in a drum.

Part No. FIL19099....\$42.99



Goldenrod Filters

Standard or water block, up to 150 psi using standard 1" pipe fittings. Transparent bowl with sediment drain, comes with filter. Order pipe fittings separately. Water block unit will not pass water once bowl is full.

Water block unit,
Part no. 496.....\$59.95

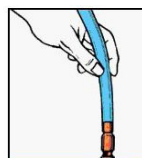
Water block replacement element,
Part no. 496-5.....\$19.95

Adapter Kit

Bushings and fittings to connect Goldenrod filter unit to above fuel pumps.
Part No. ADP-KT....\$22.90



SUPER SIPHON



Super Siphon works with almost all liquids. No more sucking up mouth full of gas. Anti static, can be used to transfer aircraft fuel without danger of sparks. Just move siphon pump vigorously in an up and down motion. Once the flow starts, let Super Siphon do all the work. 1/2" Dia., 6' Hose.

Part No. SS4.....\$14.95

All Purpose Funnels

High impact poly funnels have many uses, 3 sizes. Large 1 quart capacity. Item No. 1128.....\$3.95
Medium 1 pint capacity. Item No. 1127.....\$2.95
Small 1/2 pint capacity. Item No. 1126.....\$2.95
Set of all three, Item No. 1129.....\$5.95

Long Neck Funnel,
10" long, SET OF 2
Part No. 232017.. \$2.95



1129

FILTER FUNNEL

Filter funnel has fine mesh screen to filter out most foreign matter, Light weight poly plastic. May look different than picture.

2 qts. Part No. 28-1009.....\$5.95



MR FUNNEL

Mr. Funnel filters out solids to .005 inch and allows you to inspect for water while fueling. Heavy duty, fast flow stainless steel filter membrane. Clean by back flushing. 4 sizes.

3.5" dia. 2 gpm No. F1C...\$18.95
5.5" dia. 2.5 gpm No. F3C...\$24.95
8.5" dia. 5 gpm No. F8C...\$36.95
High Flow 10 gpm No. F15C...\$60.95



TPC Plastic Gas Cans

High density, durable polyethylene, red color. Perfect for ATV, snowmobile, & chainsaw gas/oil mix. TPC Brand 5 gal. size, Item No. 80033.....\$34.95

TPC Replacement spout. No. 85040 \$12.95



FUEL HANDLING

FUEL STORAGE DRUMS

Use as a boat fuel tank!

WITHDRAWAL TUBE ASSEMBLIES

Withdrawal tube assembly for above 15 & 30 gal drums.
Complete tube comes with fuel tank fitting
and bushing for attaching outboard fuel hose.

WITHDRAWAL TUBE ONLY

B7220 (15 Gal) \$20.00 B7230 (30 Gal) \$20.50

BUSHING FOR INSTALLING WITHDRAWAL TUBE IN DRUM

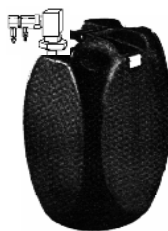
BUSH (WORKS FOR BOTH 15 and 30 Gallon drums) \$4.00

OUTBOARD FUEL CONNECTORS ARE LISTED ON PAGE 13. CHOOSE THE CORRECT TANK FITTING FOR YOUR OUTBOARD.



Bung Wrench for Plastic drum lids.
Part No. 30169... \$19.95

Withdrawal assembly fits into 15 or 30 gallon drums. Outboard tank adaptors allow the connection of your fuel line.



15 & 30 Gallon Drums

Plastic drums of high density polyethylene heavy duty plastic. With molded in handles. Plastic bungs seal tight. Cube shape stores easily. Black color for added ultraviolet resistance. Clear available

15 gal. black,	PC15-BLK.....\$195.00
15 gal. clear,	PC15-CLR.....\$195.00
30 gal. clear,	PC30-CLR...\$284.95

Replacement Bungs with gaskets:

3/4" solid ,	PPA11.....\$1.95
2" x 3/4" combo,	PPA53...\$3.50
2" vented,	PPA57V.....\$4.95
2" Butress (coarse thread)	PPA57B5....\$4.95



FIREPOWER LC UTILITY CONTAINERS

Built with easy to remove cap with side grip and wrench hex plug. These jugs have Ergonomic two handle design places one handle lower for easier lifting and better control. Made from high impact polyethylene! Also features an adjustable vent!

HOSE SOLD SEPARATELY, YOU WILL NEED TO ORDER A HOSE AS WELL WHICH ARE LISTED ON THE RIGHT

300-00900 WHITE \$39.95

300-00903 GREEN \$39.95

300-00902 ORG \$39.95

300-00901 BLK \$39.95



FILLER HOSES

300-10000 CLEAR HOSE \$10.95

300-10001
REINFORCED HOSE \$13.95

300-10011
FLOW CONTROL VALVE WITH
SPIRAL TECH HOSE \$22.95

LC2 JUG PARTS

300-10101 LID \$12.95
300-10111 O-RING \$2.95
300-14120 VENT \$2.50

TOOLS

36 PC 1/4" DRIVE MECHANIC'S SOCKET SET

Chrome vanadium alloy steel construction for strength and durability. Polished nickel chrome plated finish resists corrosion. Features high torque quick release ratchet 72 gear teeth for 5 degree sweep. Smaller head for tight areas, 1pc each spinner handle, universal joint and 3" extension bar. 10pc standard SAE socket sizes: 5/32", 3/16", 7/32", 1/4", 9/32", 5/16", 11/32", 3/8", 7/16" and 1/2" 6pc Deep SAE socket sizes: 7/32", 1/4", 5/16", 3/8", 7/16" and 1/2" 10pc standard mm socket sizes: 4mm, 5mm, 6mm, 7mm, 8mm, 9mm, 10mm, 11mm, 12mm and 13mm 6pc deep mm socket sizes: 4mm, 6mm, 7mm, 8mm, 10mm and 12mm



Part No. 260040.....\$59.95, sh. wt. 9 lbs.

51 PC 3/8" DRIVE MECHANIC'S SOCKET SET

Features high torque quick release ratchet, 72 gear teeth for 5 degree sweep and smaller head for tight areas. 12pt SAE and Metric standard and deep wall sockets. Chrome vanadium alloy steel for strength and durability

Set contents: 1pc. 3/8" dr. quick release ratchet, 1pc. universal joint, 2pcs. 3" and 6" extensions, 2pcs. spark plug sockets, 25pcs. SAE and metric std. sockets and 20pcs. SAE and metric deep sockets. Durable storage case also included.



SAE std. Sizes: 1/4", 5/16", 3/8", 7/16", 1/2", 9/16", 5/8", 11/16", 3/4", 13/16", 7/8" and 15/16"
SAE Deep sizes: 5/16", 3/8", 7/16", 1/2", 9/16", 5/8", 3/4", 13/16", 7/8" and 15/16"
SAE Spark plug sizes: 5/8" and 13/16"
Metric std. sizes: 7mm, 8mm, 9mm, 10mm, 11mm, 12mm, 13mm, 14mm, 15mm, 16mm, 17mm, 18mm and 19mm
Metric deep sizes: 8mm, 10mm, 12mm, 13mm, 14mm, 15mm, 16mm, 17mm, 18mm and 19mm

Part No. 260057.....\$116.95, sh. wt. 12 lbs.

11 PC COMBINATION WRENCH SET (SAE)

Chrome vanadium steel construction
Fully polished finish
Handy storage rack
SAE sizes: 1/4", 5/16", 3/8", 7/16", 1/2", 9/16", 5/8", 11/16", 3/4", 13/16" & 7/8"
Part No. W1061.....\$25.95, sh wt. 3 lbs.



11 PC COMBINATION WRENCH SET (METRIC)

Chrome vanadium steel construction
Fully polished finish
Handy storage rack
Metric sizes: 9mm, 10mm, 11mm, 12mm, 13mm, 14mm, 15mm, 16mm, 17mm, 18mm and 19mm
Part No. W1062.....\$25.95, sh wt. 3 lbs.



9-1/2" GROOVE JOINT PLIERS

Drop forged steel
Cushion grips
Fully polished head
Part No. 260011.....\$10.95



10" Vice Grip Pliers

Straight jaws provide maximum contact on flat, square, or hex work. Ideal for tightening, clamping, twisting and turning
Turn screw to adjust pressure and fit work. Stays adjusted for repetitive use, Classic trigger release designed to provide maximum locking force.
Part No. PET10R.....\$19.95



7 PC DUAL CUSHION PLIERS SET

7 piece plier set
10" groove joint pliers
7-1/2" diagonal cutter
8" long nose plier
8" slip joint pliers
4-1/2" diagonal cutter,
bent nose and end nipper pliers
Part no. W30759.....\$54.95
sh. wt. 5 lbs.



7 PC PROFESSIONAL SCREWDRIVER SET

Phillips sizes: #1 x 3" and #2 x 4"
Slotted sizes: 3/16 x 4", 1/4 x 4", 1/8 x 4" and 3/8 x 8"
#1 x 3", #2 x 4" Phillips

Part no. W80007.....\$14.95
sh. wt. 2 lbs.



TOOLS

Pistol Grip Grease Gun



Small, versatile gun allows user to let pipe come out of front or top. Handy for all greasing applications. Barrel takes 3-oz. grease cartridges or can be bulk loaded. Includes, 5-1/2" straight grease pipe standard-duty coupler and 3-oz. cartridge of corrosion control grease.

Sh. wt. 4 lbs.
Part no. 260067.....\$19.95

Lever Action Grease Gun



Heavy Duty lever action grease gun. Uses 14 oz. grease cartridge or can be bulk loaded. Order cartridges below.
4 lbs. Part no. W54202.....\$25.95



G300

12" Flexible Extension Tube: 12" Flex tube for lube gun.
Sh. wt. 1 lb. Part No. W54210.....\$6.95
Replacement Zerk grease coupler, connects grease tube to zerk.
Part No. G300.....\$4.95

Hacksaw, Adjustable 10 - 12"

Use for cutting, light steel, aluminum, etc. with 10" blade.

No. 85-565...\$13.00

Replacement 12" blade

24tpi. each

Part No. 48-206...\$2.95



67 PC HAND RIVETER SET

67 piece hand riveter set

Includes riveter with 4 nozzles

15 each of the following rivets:

3/32", 1/8", 5/32" and 3/16"

Part no. W2017.....\$17.95



Extra rivets available in 100 packs, call for price
Part No. 33-10**

Cylinder Glaze Breaker / Hone

For new piston rings to seat properly it is necessary to hone your cylinders when replacing the rings and pistons. Full 2" to 7" range, 3 large stones operates with any electric drill. Furnished with 220 grit stones.

Part No. 39-1030.. \$54.95



Replacement Stones, 280 grit 3/pk.

Part No. 39-1038... \$23.95

30 Pc. Hex Wrench Set

15 piece metric set. .7 - 10 mm.

15 piece US set. .028"-3/8".

With a storage organizer.

Part No. 26377.....\$17.95



11 pc. Metric Only Hex Set

Metric set, #27-0166 \$13.95

(not shown)

Compression Tester

Used on small engines, chainsaws, out boards, & snow machines. 14/18mm plug size. Holds pressure to take reading. Reads to 0-300PSI.

Part No. 3612.....\$39.95



Snap ring pliers

Works on inside & outside opening snap rings. Include extra sets of tips.

Part No. 57-8186.....\$25.00



2 Ton Hydraulic Jack

Small size, about 9" tall but lifts 4000 lbs.

Part no. HY-JACK..\$29.95



Universal Flywheel Pullers

Includes grade 8 bolts, six 6mm & four 8mm bolts. Also used for Polaris flywheels. Part No. 12-10275.....\$119.95



Multi Purpose Cable Ties

250 Piece package assorted colored ties. Include 4", 6" * & 12" lengths.

Part No. W2918.. \$7.95



REPAIR / SEALANTS

Tape and Tie Wire



Tie wire

400' roll 16 gauge.
soft steel wire.
#W5.....\$11.95



Duct Tape

2" x 180" roll. #10-2260
\$10.99



**Black PVC
Electrical Tape**

3/4" x 60'
#10-2262 \$1.59

Fiberglass Repair Kits and Resin

Polyester Fiberglass Repair Kits: For fiberglass repair, contains 1 quart resin, 11cc tube of hardener, 1 sq. yard of fiberglass mat plus instructions.

Part No. 370\$98.95



Small kit contains 8 oz. resin,

hardener & 3 sq. ft. of fiberglass cloth.

Part No. 637.....\$43.95

Epoxy

Quick Set Epoxy Fast curing, 4-6 min.
Works up to 200°F. Resists most solvents,
waterproof, all around use.
Part No. S-208 \$6.00



Permatex Gasket Maker

Non-corrosive gasket material
Fills gaps up to 0.15 degrees
Allows for easy disassembly
Great for split crank cases, water
pumps, chain cases and transmis-
sion cases.

Part No. 59-9191.....\$29.95

Permatex Anti-Seize Lubricant



- 1 oz
- Withstands high temps
- Prevents Seizing and Galling
- Insures removal of spark plugs
- Prevents corrosion

Part No. 59-9196.....\$6.25

Loctite / Thread lock

Locks and seals nuts and bolts prevent-
ing parts from loosening due to vibra-
tion. Protects threads from corrosion.
Adds 1600 PSI clamping force to
threaded assemblies from 40° to 300° F.
Medium strength for easier disassembly.
Loctite 242 6ml. tube
Part No. 242.....\$8.00
Three bond 1303 high strength, 10ml.
Part No. TB1303.....\$16.95



J-B Weld



Fine steel in a liquid base hardens
to form a steel tight weld. Works
on Aluminum boats, Outboard
motors, Pumps, Water tanks, Fuel
tanks.

Part No. JB8265.....\$7.99

Gasket sealants

ULTRA BLUE Silicon gasket
material. Oil resistant, low odor,
non corrosive.
Part No. 59-9182.....\$12.75



ULTRA COPPER
Pliable, non hardening gasket
sealant, resists gas, oil, diesel &
antifreeze.
Part No. 59-9192.....\$13.50



High Temp Permatex gasket sealer.
Part No. 26BR.....\$11.95



Marine Silicone Sealants

100% Marine grade silicone.
won't turn yellow. Remains flexible
from -70° to 480° F. Can be used
above or below the water line, 2.8
OZ tube.
Clear: Part No. 82102.....\$14.95
White: Part No. 82101.....\$14.95



TIE DOWNS & ACCESSORIES

Ratchet Tie Down Straps



1" wide weather resistant nylon webbing, heavy gauge hooks, quick release and rapid ratchet to tighten strap. Heavy duty 1800 lb.capacity 12' long.
4 Pack BY411218...\$27.95



Nylon Tie Down / Starter Rope

Strong braided nylon rope. Used in all types of recoil starters. Excellent cord for tying down loads in sleds and many other uses. 200' rolls.

Size	Lgth.	Part No.	Price
#4 (1/8")	200'	START-4-200	21.95
#5 (5/32")	200'	START-5-200	26.95
#6 (3/16")	200'	START-6-200	29.95
#7 (7/32")	200'	START-7-200	31.95
#8 (1/4")	200'	START-8-200	38.95

Hand Winches



Heavy duty ratchet hand operated winch, sealed bearings on drive shafts, free wheel lever capacity 600 to 1800 pounds. 20" X 2" nylon strap with hook on 1500 & 1800

Winch		Part No.	Price
800 lb.	20' STRAP	BY800	\$45.95
1800 lb.	20' STRAP	BY820	\$88.95

Winch Strap with Hook

2 x 25' Nylon Strap, Part No. LR50475.....\$17.95



Bungee Cords With Poly Covering



24 piece assortment with steel hooks, Package includes:
6-18", 6-10", 4-24", 2-32" 2-40".
Part No. EK6622.....\$34.95

12 piece assortment with steel hooks, includes:
3-10", 3-18", 3-24", 1-32"
Part No. EK6621.....\$20.95



Locking Hitch Pin

Folding spring wire locks pin without tools. Makes sled hook ups quick and secure.
EA, No. BY6060.....\$2.25
2 PK No. BY6061.....\$3.95



2 TON POWER PULLER

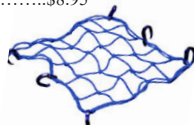
Performance Tool sturdy come-a-long power puller with a 2-Ton pull capacity (rolling pull) and a 1 Ton lift capacity. Drop forged steel safety hooks, 12 ft. aircraft grade cable, singl notch release for safety. Part No. W4000\$54.95



Expandable Cargo Nets

Quickly Secures Loads on Luggage Racks, Trailers, ATV's, Sleds, Etc. Elastic Cord With 6 Plastic Hooks. Black, 15" x 15", #EM60500.....\$8.95

Larger size 15" x 30" great for ATV racks, black.
Part No. EM60510...\$9.95



Rubber Bungee Cords

Rubber tarp straps
Versatile and easily stored
2" S-hook on each end
10 pack includes: (4) - 9",
(2) - 15", (2) - 21", (2) - 31"

Part No. EK06610...\$23.95



FISH CREEK SALES 1-800-446-2611, INFO: 1-907-373-2650

CHAINSAW BARS, CHAINS AND ACCESSORIES

CHAINSAW CHAIN LOOPS

Available for all saws
Sold each



14" Loops \$17.95, 16" Loops \$21.95
18" Loops \$20.95 20" Loops \$25.95
24" Loops \$26.95 28" Loops \$32.95
We also stock ripping & carbide coated chain



TO GET THE RIGHT SIZE CHAIN:
Count the number of drive links in your chain and note the number that is stamped on the drive link. The drive link example at left has the number 72 stamped on it.



Sprockets & Bars
Call for prices
Please have saw info



ASSEMBLED FILE GUIDE \$12.95

7/32" File & Guide.....Item No. 31686
3/16" File & Guide.....Item No. 31690
5/32" File & Guide.....Item No. 37534



CHAINSAW FILES

Premium Round Files leave a smooth polished finish on the sharpened surface of the cutter – 8" long.
2 pack... Price \$6.50, / 1 dozen ... \$19.95

<u>2 Pack</u>	<u>Chain No.</u>	<u>Size</u>	<u>Dozen No</u>
40459	(91)	5/32"	70504
40460	(20)	3/16"	70503
40458	(72)	7/32"	70502



Wedges

Plastic bucking and felling wedges. Keep saw from binding in cut, very tough wedge.



5 1/2"

Item No.TG5...\$3.95

8" Item No. TG8...\$15.95

10" Item No. TG10.....\$17.95

12" Item No. TG12.....\$17.95

Thumb Pump:

Premium refillable needle nose grease gun for sprocket nose bars.
Heavy duty metal. 3oz. capacity.
Grease not included.
Part No. 65050.....\$14.95



Chainsaw Bar Oil

A special formula which sticks to the saw bar to prolong both chain and bar life in all chainsaws. Gal. Sh. Wt. 9 lbs.
1 QT. Amsoil Synthetic Bar Oil,
No. ABC ... \$6.95

Hearing Protectors

Economy Muff:
25db.noise reduction
rating, protect your ears.
Part No. HB25...\$13.95



Combination T-Wrenches



5/8" x 7/16", (11mm x 16mm)

Part no. 57-001A..... \$4.50 ea

1/2" X 3/4", (13mm x 19mm)

Part no. 57-005.....\$4.50 ea

Grinding Stones

For 12 volt grinders, 3 Pack.

Item No. Size Price

G417-3 5/32" \$18.95

G418-3 3/16" \$18.95

G419-3 7/32" \$18.95



Bar Guards



Scabbard style plastic bar guard.
14-16" No. 28934.....\$10.95
18-20" No. 28933.....\$12.95

WOODCUTTING TOOLS

Estwing

Steel Handle Axes

Campers Axe with sheath, 26" long, cushioned grip. Sh. wt. 6#,
Part no. E45A.....\$79.95
16" Handle E44A.....\$67.95



Sportsman's Axe with sheath
14" long, cushioned grip.
Sh. wt. 3 lbs., Part No. E24A.....\$56.99

21" Bow Saw

Light weight but strong with razor sharp teeth, this 21" bow saw is ideal for those small wood cutting chores around camp or carry on the snow machine for trail work.

Part No.00-943.....\$17.95



824RX
SINGLE BIT AXE

824WF
WITH FIBER-
GLASS HANDLE



DOUBLE BIT AXE

3-1/2 lb. double bit head, 36" hickory handle. Part no. 824DB.....\$62.95
Replacement handle
Part No. 140-03.....\$21.99

SINGLE BIT AXE

Full size axe, 5 lb. head, 36" hickory handle.

Part No. 824RX.....\$53.95

Replacement Handle, Curved 100-03 (see below)

Single bit axe with fiberglass handle. Part no. 824WF.....\$53.95

SMALL AXE'S

BOYS AXE, 3/4 size light axe great for trail work. Excellent feel and balance. 2-1/4 lb. head, 28" hickory handle.

Part No. 826A1.....\$64.99



826A1
BOY'S AX

CAMP AXE, 1 1/4 lb. head & 16" hickory handle.

Part No. 827A3.....\$25.95

Replacement handle No. 65142.....\$10.95



827A3
CAMP AX

SPLITTING MAULS

Mauls are fitted with straight grain hickory handles or break resistant fiberglass handles, 6 or 8 lb. head.

Wood Handled Maul:

36", 6 lb. Item No. 64-856.....\$43.95

36", 8 lb. Item No. 64-858.....\$54.95

Fiberglass Handled Maul: (stronger than wood)

36", 6 lb. Item No. 64-756.....\$53.95

36", 8 lb. Item No. 64-758.....\$62.95



CARGO BAGS



ATV TEK Oversized Arch Cargo ATV Bag



ATV TEK Arch Series ATV Padded Bottom

CARGO BAG AND PADDED BOTTOM BAGS

- 5-way lid opening
- Heavy-duty polyester reinforced by a steel frame
- Zipperless, fully removable lid for instant cargo access
- Weatherproof seal keeps contents dry and dust-free
- Multiple pockets and storage options

The arched steel frame keeps the bag's shape no matter how much gear you stuff into it. A zipperless, fully removable lid lets you instantly access the 5,560 cu.-in.-capacity cargo area from all sides. A 1" weatherproof seal guarantees contents will stay dry and dust-free. Other features include top bungee straps, two expandable drink holders, front pockets and internal organizer pockets. Made of 600-denier polyester sandwiched between two layers of water-resistant PVC. Imported. Outside dimensions: 36"L x 18-1/2"W x 14"D. Colors/Camo patterns: Black, Mossy Oak® Break-Up®.

Description	Size	Black	Camo	Price
ATV Cargo Bag	36"x19"x14"	45-2601	45-2602	\$269.99
ATV Padded Seat	36"x18"x12"	45-2605	45-2606	\$239.99



FENDER BAG

Universal fit and design
Made from Tarpaulin, a fade resistant waterproof material, zipper free design, available in mossy oak or black, 800 cu in storage

Black Part No. 45-2609 \$79.95 ea.
Camo Part No. 45-2610



EXPEDITION BAG

5-Way lid opening, heavy duty polyester reinforced by arched steel frame, zipperless design, weatherproof seal keeps contents dry and dust free, 36x12x12"

Black, Part no. 45-2607 \$169.99
Camo, Part no. 45-2608 \$169.99



Service manuals for the do it yourself repair person. Manuals include hundreds of photos and illustrations of repairs and maintenance, disassembly and assembly and specifications.

Honda:

ATC/TRX200/250 '84-87	M455
TRX 250 Recon '97-07	M446
TRX 300/FW/4x4 '88-00	M346
TRX 350 Rancher '00-06	M200
TRX 400 Foreman '95-03	M459
TRX 420 Rancher '07-14	M202
TRX 450 Foreman '98-04	M205
TRX 500 Foreman '01-04	M210
TRX 500 Rubicon '05-12	M206

Kawasaki:

KLF 220 '88-95	M465
KSF 250 '87-00	M385
KLF 300 2x4, 4x4 '85-98	M466
KEF 300 Lakota '95-99	M470

Polaris:

All 3,4 & 6 wheel '85-95	M496
Sportsman 400/500 '96-03	M365
500 Scrambler 4x4 '97-00	M363
600/700/800 Sptsman '02-10	M366

Suzuki:

ALT/LT125/185 '83-87	M381
LT230 '85-90	M475
King Quad '87-95	M483

Yamaha:

Timber wolf '91-97	M489
YFM 350 Big Bear, All	M490
YFM 400 Kodiak '93-98	M493
YFM 660 Grizzly '02-07	M285

ATV REPAIR AND MAINTENANCE MANUALS



\$51.95

(excl. M365 \$49.95)

ATV ACCESSORIES



ATV Covers

- **DOUBLE STITCHED SEAMS**
- **INEXPENSIVE**
- **FITS LARGER FOUR WHEELERS WITH RACKS**
- **ELASTIC CORD SEWN IN BOTTOM FOR A SNUG FIT**
- **POLYURETHANE COATED NYLON**

ATV Covers:

Black XL, Part no. 27-6328.....\$64.95

Black XXL, Part No. 27-6325.....\$79.95

Camouflage, XL, Part no. 27-6326.....\$74.95

Camouflage, XXL, Part no.27-6324.....\$79.95

ATV Windshields



56-57010

56-57011

- **EXCELLENT RIDER PROTECTION**
- **FULL PROTECTIVE PLASTIC BEADED EDGE**
- **BLACK PAINTED STEEL BRACKET KIT**
- **SHATTER RESISTANT, .080 POLYCARBONATE**
- **UNIVERSAL WINDSHIELD WITH HEADLIGHT CUT OUT OR WITHOUT CUTOUT FITS ALL MACHINES**

WITH HEADLIGHT CUTOUT

Clear Part No. 56-57010 ...\$205.00

WITHOUT HEADLIGHT CUTOUT

Clear Part No. 56-57011 ...\$205.00

KOLPIN GUN BOOTS

GUNBOOT IV/TRANSPORT

23-1709 BLACK \$69.95



GUNBOOT 4.3 WITH BRACKET

Provides ample room for 50mm scope and even rifles with slings attached or shotguns up to 51" in length. Installs quickly and easily.

ATV Gun Rack

Heavy duty steel, protective rubber coated hangers holds gun (s) cased or uncased, bolts to front or back racks or handle bars on all 4 wheelers. One gun holder, 61-1710...\$33.95



61-3011 \$109.95

ATV Seat Covers

\$39.95

Replace your torn seat cover with these high quality double stitched marine vinyl covers. Black color.



Honda:

TRX200 91-97 860-12090

TRX250 Recon '97-04 860-12597

TRX250 Recon '05-16 860-12505

TRX300 '88-00 860-13088

TRX350/400 '00-03 Rancher 860-13500

TRX350/400 '04-07 Rancher 860-13504

TRX400 '95-01 Foreman 860-14095

TRX420 '07-13 Rancher 860-14207

TRX450 '98-04 Foreman 860-14598

TRX500 '05-11 Foreman 860-15005

TRX500 '12-13 Foreman 860-15012

Polaris:

300 Sportsman '08-09 860-53008

330 Trail Boss '02-09 860-53396

400-800 Sportsman '05-12 860-55005

Suzuki:

LTF250 Quadrunner '99-12 860-32599

LTF300 '99-02 860-32599

King Quad 450/500/700 '07-15 860-33005

Yamaha:

YFB250 Timber Wolf 92-01 860-42592

YFM350 Wolverine '95-05 860-43595

YFM350 Big Bear '87-99 860-43588

YFM350 Grizzly '07-14 860-44000

YFM400 Big Bear '00-06 860-43500

YFM400 Big Bear '07-10 860-44007

YFM400 Kodiak '96-99 860-44096

YFM400/450 Kodiak '00-06 860-44000

YFM450 Grizzly '07-14 860-44000

CALL IF YOUR MODEL IS NOT LISTED

ATV BATTERIES / ELECTRICAL

BATTERY CHARGERS

NOTE, MAY LOOK DIFFERENT

THAN PICTURED



For 12 volt automotive type batteries, charge rate selector to charge and maintain all lead acid batteries.

2/4 amp charger, for ATV & snow machine batteries.

sh. wt. 8lbs.

Part No. 30-002

\$79.95



Head light bulbs

GE3650 25/25w \$1.75

6260SA 60/60w \$3.95

4765H 45/45w \$15.95

12-1085 35/35w \$12.95



GE3650

12-1085 / 4675H

3-Way ATV Spark Plug Wrench

Deep reach, 10, 12 & 14mm plug sizes

Part No. 57-6023.....\$8.95



HEAVY DUTY ATV JUMPER CABLES

8' Long, 8 Gauge

49-1606 \$33.95



Battery Tender Jr., .75 amp, will not overcharge your ATV battery, will fully charge and then maintain the correct level. Polarity protected, 12' cord included.

Part No. 56-1129 \$44.95

Electric Hand Warmers

~ High-Low Temperature

~ Fast Warm-up

~ Quick Installation

~ 7.5 & 15 Watt

Electric Snow mobile Hand Warmers, works on all machines. No. 40-4108 \$74.95



Slow set Epoxy for hand warmer installation.

No. S31.....\$4.95

Electric Thumb Warmer Kit



Thumb warmer, replace original or add-on, has 3-Position switch/Hi-Off-Low, no screws or holes needed for installation.

Part No. 40-4149... \$59.95

Handle Bar Gauntlets



Gauntlets keep hands warmer while riding.

Cinch strap secures gauntlets to handlebars.

Black No. 45-1901 \$51.95

FIRE POWER SEALED AGM FACTORY ACTIVATED BATTERIES

Sealed Factory activated batteries. Sealed maintenance free design, 1 yr. replacement warranty. Shipped charged and ready to install, (Freshening charge recommended before installation)

Absorbed glass mat technology. To select your battery just measure the old battery and compare the sizes in the chart. Some of the most common applications are also listed below.



<u>Replaces:</u>	<u>Dimensions L x W x H</u>	<u>Part No.</u>	<u>Price</u>
YB14LA2	5-5/16"x 3-1/2"x6-9/16"	49-2241	\$78.95
YB16CLB	6-7/8"x4"x6-7/8"	49-2253	\$102.95
YT4LBS	4-1/2"x2-13/16"x3-3/8"	49-2243	\$33.95
YTX5LBS	4-1/2"x2-13/16"x4-3/16"	49-2244	\$42.95
YTX7LBS	4-1/2"x2-13/16"x5-3/16"	49-2245	\$48.95
YTX9BS	6"x3-7/16"x4-3/16"	49-2246	\$48.95
YTX12BS	6"x3-7/16"x5-1/8"	49-2247	\$66.95
YTX14BS	6"x3-7/16"x5-3/4"	49-2248	\$71.95
YTX20LBS	6-7/8"x3-7/16"x6-1/8"	49-2252	\$115.95
YTX24HL-BS	8-1/8"x3-9/16"x6-3/8"	49-2240	\$134.95
YTX30L-BS	6-1/2"x4-15/16"x6-7/8"	49-2290	\$97.95
Y50-N18LA	8-1/8"x3-9/16"x6-3/8"	49-2240	\$134.95

Some of the most common ATV applications:

Honda TRX300-500 YTX14-BS 49-2248 \$71.95

Honda TRX420 Rancher YTX20L-BS 49-2252 \$115.95

Yam. Kodiak 400 '96-00 YTX20L-BS 49-2252 \$115.95

ATV ELECTRICAL

STARTER MOTORS AND BRUSHES

Starter motors, rebuild kits and replacement brushes for starter motors. Rebuild kits include brushes, bearings & seals.

Incomplete listing, call for availability if your model is not shown.



Starter Problem? If you push the starter button and hear only a click then you may have a bad battery. The click noise is the starter relay working. If you have a good battery, you can check the relay and starter by using a screwdriver and touch both the large relay terminals at the same time. The starter should work and your relay is bad. If the starter doesn't work then your starter brushes or starter are probably bad. The starter relay is usually located near the battery with the large positive cable on one bolt and the other bolt has the cable that goes to the starter.

Starters, Brushes & Starter Relay Applications

Model/Make/Yr.	Starter	Price	Rebuild Kit	Price	Relay	Price
HONDA:						
TRX250 Recon '97-07	26-1212	\$107.95	26-1151	\$14.95	NLA	
TRX250 Recon '08-16	26-1292	\$176.95	-----	-----	NLA	
TRX300FW '88-00	26-1211	\$115.95	26-1151	\$14.95	NLA	
TRX350 ALL Rancher '00-06	26-1215	\$109.95	26-1171	\$30.95	NLA	
TRX400FA/FGA Rancher '04-07	26-1218	\$181.95	-----	-----	NLA	
TRX400FW Foreman '95-01	26-1219	\$123.95	26-1151	\$14.95	NLA	
TRX400FW Foreman '02-03	26-1219	\$123.95	26-1171	\$30.95	NLA	
TRX420 Rancher '09-16	26-1349	\$113.95	27-70513	\$43.95	NLA	
TRX450ES Foreman '98-01	26-1219	\$123.95	26-1151	\$14.95	26-1229	\$25.95
TRX450FE Foreman '02-09	26-1219	\$123.95	26-1171	\$30.95	NLA	
TRX500FM Foreman '05-11	26-1219	\$123.95	26-1171	\$30.95	NLA	
TRX500FM Foreman '12-14	26-1349	\$113.95	27-70513	\$43.95	NLA	
TRX500FA Rubicon '04-16	26-1222	\$146.95	26-1151	\$14.95	NLA	

POLARIS, ARCTIC CAT, BOMBARDIER, KAWASAKI AND SUZUKI:

AVAILABLE FOR MOST MODELS, CALL FOR APPLICATION AND PRICE

YAMAHA: Call for models not listed

YFM80 '86-08	26-1287	\$81.95	26-1154	\$18.95	-----	-----
YFM250 Timber Wolf '83-97	26-1280	\$100.95	26-1156	\$15.95	-----	-----
YFM350FW Big Bear '87-96	26-1284	\$107.95	26-1166	\$28.95	-----	-----
YFM350FWB Big Bear '97-99	26-1285	\$91.95	26-1158	\$17.95	-----	-----
YFM400 Big Bear '02-12	26-1285	\$91.95	26-1166	\$28.95	26-1772	\$21.95
YFM450 Kodiak '00-06	26-1286	\$119.95	26-1169	\$29.95	26-1772	\$21.95
YFM600/660 Grizzly '98-08	26-1286	\$119.95	26-1169	\$29.95	26-1772	\$21.95

Starter Relays



*Honda Rancher
'00-02
26-1229 \$20.95



Universal Starter
Solenoid
With multiple adaptors
will fit any application.
Wiring maybe req.
Part No. 26-1772...\$21.95



26-1228 \$22.95

ATV PARTS

Swingarm Bearing Kits



Kits include all the bearings, seals, shafts and spacers re-quired for a swingarm rebuild
CALL FOR APPLICATIONS NOT LISTED

HONDA:

TRX90	'93-13	22-81009	\$64.95
TRX200/D	'90-97	22-81010	\$69.95
TRX250 Recon	'97-13	22-81056	\$34.95
TRX300/FW	'88-00	22-81056	\$34.95
TRX350 Rancher	'00-06	22-81056	\$34.95
TRX400FM Foreman	'02-04	22-81086	\$37.95
TRX420FM/FE	'07-13	22-81203	\$73.95
TRX450ES/FW Formn	'98-01	22-81056	\$34.95
TRX450FE/FM	'02-04	22-81055	\$37.95
TRX500FM	'01-13	22-81056	\$34.95

ATV SHOCKS



Built to exceed OEM specifications and requirements. All shocks come with heavy duty springs and bushings, Spring retainer and bumper also included if required.
HEAVY DUTY SPRINGS AVAILABLE - 20% STIFFER FOR HEAVY LOADS
ASK IF YOU DON'T SEE YOUR MODEL



ENGINE VALVES

Engine valves available for most Honda and Yamaha ATV's. Call for price and availability.

Voltage regulators & Ignition Coils

available for many models, call for price and availability.



THROTTLE, BRAKE AND CHOKE CABLES

Exact replacement for original cables, Special nylon inner liner assures smooth operation. Call for price



TIE ROD END KITS



TIE ROD ENDS

HONDA:

All '90+ models thru TRX450 exc. below

TRX500/TRX650/TRX680	251-1008	\$43.95
1990 + ER/X/EX MODELS	251-1053	\$43.95
TRX70-125 MODELS 1986-08	251-1006	\$55.95
	251-1001	\$47.95

YAMAHA:

YFM50-100, ALL '87-08	251-1011	\$63.95
YFB250FW TIMBERWOLF '92-00	251-1016	\$54.95
YFM350FW BIG BEAR '87-99	251-1016	\$54.95
YFM400 BIG BEAR/GRIZ '00-09	251-1007	\$56.95
YFM400 KODIAK 4x4 '93-02	251-1016	\$54.95
YFM400 KODIAK 4x4 '03-04	251-1007	\$56.95
YFM400 KODIAK 4x4 '06	251-1031	\$45.95
YFM450 GRIZLY IRS '07-08	251-1031	\$45.95
YFM550-700 GRIZLY ALL	251-1016	\$54.95

Tie Rod Kits include 2 tie rod ends, 1 inner and 1 outer with 2 cotter pins.

Ball Joint Kits include 1 ball joint, rubber boot and cotter pin. AVAILABLE FOR MOST ATVS. CALL FOR MACHINES NOT LISTED.



BALL JOINT KITS

BALL JOINTS	UPPER	LOWER	PRICE
HONDA:			
TRX300 ALL	242-1009	242-1009	\$27.95
TRX350 RANCHER	242-1009	242-1015	\$27.95
TRX400 RANCHER	242-1009	242-1015	\$27.95
TRX400 FOREMAN	242-1009	242-1009	\$27.95
TRX420 FA/FPA '07-13	242-1009	242-1015	\$27.95
TRX420 FE/FM '14-17	242-1015	242-1015	\$27.95
TRX450/500/650/680	242-1015	242-1015	\$27.95
YAMAHA:			
ALL 350/450 MODELS	242-1009	242-1009	\$27.95
YFM550 GRIZLY '09	242-1029	-----	\$29.95
YFM660 ALL '02-08	-----	242-1029	\$29.95
YFM700 GRIZLY ALL	242-1029	-----	\$29.95
450/660/700 RHINO	242-1009	242-1009	\$27.95



ATV TIE ROD UPGRADE KITS

Upgrade 10mm stock tie rod ends prone to failure to heavy duty 12mm tie rod assemblies. Each kit contains two tie rods, four tie rod ends, along with cotter pins and jam nuts. Available for most makes and models. **\$129.95-\$148.95**

ATV DRIVE & SUSPENSION PARTS

CV AXELS - CV HALFSHAFTS & CV JOINT KITS



CV Complete Axels

- Complete assembled axel with cv joint, ready to install



WHEEL BEARING KITS

We have wheel bearing and seal kits available for most ATV's and UTV's!



CV Rubber Boot Kits:

Universal Boot Kit fits all models, includes locking bands, clamp tool and grease. 63-92042..... \$18.95 each



Brake Shoes



Rotors



Brake Pads



Master & Wheel Cylinder Kits

UNIVERSAL JOINTS

High quality replacement for original part.
Call for applications



ATV HUBS



Common sizes listed for Honda but many other makes and models available.

Model	Year	Description	Part#	Price
TRX200	'86-97	4-bolt	121958	\$69.95
TRX250D	'97-99	4-bolt	121952	\$63.95
TRX300	'88-92	4-bolt	121958	\$69.95
TRX350T/F	'00-06	Left Rear	121954	\$50.95
TRX350T/F	'00-06	Right Rear	121955	\$62.95
TRX400FW	'95-03	Left Rear	121954	\$50.95
TRX400FW	'95-03	Right Rear	121955	\$62.95
400 Rancher	'04-07	Left Rear	121954	\$50.95
400 Rancher	'04-07	Right Rear	121955	\$62.95
TRX420	'07-12	4-bolt	121958	\$69.95
TRX450S/ES	'98-04	Left Rear	121954	\$50.95
500 Foreman	'05-09	Left Rear	121954	\$50.95



BRAKE FLUID

High performance, DOT 4 can be used in ATV, Auto and Snowmobiles. 12 oz. Part No. 57-1004...\$5.95

WE CARRY ALL
KINDS OF PARTS FOR ALL
OF THE MAJOR BRANDS
OF ATVS AND UTVS.
IF YOU NEED SOMETHING
THAT YOU DON'T SEE,
CALL US!

IDENTIFY YOUR HONDA ATV - WHAT THE HONDA LETTER CODES MEAN

TRX MEANS IT IS AN ATV, THE NUMBER IS ENGINE SIZE IN CC, as in TRX500

F = 4X4 (4 Wheel Drive)

T = 2X4 (2 Wheel Drive)

M = MANUAL SHIFT

E = ELECTRIC SHIFT

P = POWER STEERING

A = AUTOMATIC SHIFT

G = STOCK WITH GPS

EXAMPLES:

TRX500FM = 500cc 4X4, MANUAL SHIFT

TRX250TM = 250cc 2X4, MANUAL SHIFT

TRX420FPE = 420cc 4X4, POWER STEERING, ELECTRIC SHIFT

The 10th number or letter in the VIN (Vehicle Identification Number) is the year code:
YEAR DESIGNATIONS - 1 =2001 THRU 9 =2009, A=2010, B=2011 AND SO ON.

TIRE REPAIR/MISC ITEMS

WARN AXON Powersport winches

Perfect for ATVs and side by sides powerful and waterproof. black powdercoated to keep from rusting. Limited lifetime warranty (mechanical) for 3 years



3500	619-101031	\$649.99
3500s	619-101032	\$749.99
4500	619-101033	\$824.99
4500s	619-101034	\$924.99
5500	619-101035	\$899.99
5500s	619-101036	\$949.99

WARN VRX Powersport Winches

Warns new design which is fully waterproof and paired with all metal design and gearing. Limited lifetime warranty(mechanical) for 3 years.



2500	619-101025	\$369.99
2500s	619-101026	\$469.99
3500	619-101027	\$469.99
3500s	619-101028	\$569.99
4500	619-101029	\$549.99
4500s	619-101030	\$649.99

TARPS

Bright blue with sisal rope inside seam, grommets every 3 feet, waterproof and tear resistant.

Light weight 10' x 12'. sh.wt 5 lbs.

Part No. BPT1012.....\$14.95

Light weight 8' x 10', sh.wt 4 lbs..

Part No. BPT810.....\$11.95

Hand Tire Pump

High volume.

Part No.

04475

\$18.95



TRACK/TIRE TRACTION SCREWS



"V" sloped head with 1/2" washer head, gives these ice screws an stud extra stable platform giving much greater traction in icy conditions. Easily installs into the tread of all ATV tires and the track cleats of all snow machine tracks, 1/2" long.

1000 Pack, Part No. 18-3092...\$122.95

250 Pack, Part No. 18-3082.....\$33.95

Stove Pipes and parts

6" X 24", 24 gauge heavy duty stovepipe.

No. 6PG-HD.....\$15.99ea.



6" Damper No. 6DP..\$14.95ea.

6" Rain cap No. RC6...\$22.95ea.



Tubless Plug

Strips

5/PK

85-1031

\$3.95

TUBLESS TIRE

VALVE 4pk

85-0447

\$17.95



Rubber/

Tube

Patch Kit

85-4060

\$7.50

1-20 PSI

ATV Tire

Gauge

85-1010

\$5.95



Tubless Tire Reamer/Plunger Repair Kit

85-1032

\$8.50



Tubless Tire Reamer/Plunger T-Handle Kit

85-1034

\$12.50

MISC. ITEMS

TOYS

Realistic moving parts, suspension and rubber tires. Toys are about 8.5" long, 3" high and 3.5" wide.
We have a large variety, many are not shown.

Note: Selection always changes, some pictured may not be available



Honda CR250
959-0032 \$19.95



Suzuki Quadracor
959-0010 \$20.95



Suzuki Vinson 500
959-0006 \$30.95



Kawasaki KFX450
959-0037 \$20.95



Hon TRX450R
959-0011 \$19.95



KTM350SX
959-0016 \$20.95

SKINSATIONS 7% DEET 6oz INSECT REPELLENT

P/N 54010 \$10.95



Ben's Adventure Formula insect repellent

New 20% picaridin formulation stays put and doesn't leave you smelling like bug spray.
Won't damage, stain, melt your synthetic clothes, bags, helmets, gear, harnesses, shoes
12 hours of protection from ticks & mosquitoes
3.4 oz pump

LIGHT, CLEAN FEEL WITH A FRESH SCENT:
Never feels oily or greasy, with a scent that is pleasant.

ALSO REPELS TICKS, GNATS, BITING FLIES, CHIGGERS & FLEAS: Create a barrier against annoying bugs that can spoil the outdoors

CONTAINS ALOE AND VITAMIN E: Softens skin while it repels.

360° PUMP: Pump sprays at any angle and upside down.

P/N BEN073563
\$14.95



TIRES/TIRE REPAIR



ATV TUBES

Designed to fit perfectly in your tire. Use in older tires that will no longer hold air.

PART NO.	SIZE	PRICE
87-0104	4.80x4-8	\$9.95
87-0024	18X9.5-8	\$25.95
87-0026	20x7-8	\$25.95
87-0028	22x11-8	\$28.95
87-0032	22x11-9	\$28.95
87-0034	25x12-9	\$28.95
87-0038	22x8-10	\$22.95
87-0040	22x11-10	\$28.95
87-0044	23.5x8-11	\$28.95
87-0046	24x9-11	\$28.95
87-0048	25x8-12	\$32.95
87-0050	25x10-12	\$32.95
87-0056	26x12-12	\$32.95



Slime Super Duty Tire Sealant

- *Installed through the valve stem.
- *Stays liquid in the tire or tube.
- *Escaping air forces the liquid into a puncture.
- *Seals up to 1/4" punctures

Part No. 85-2017.....\$11.99



Tubless Tire Plug Gun

- On the wheel repair for all tubeless tires
- Gun inserts a rubber plug into the puncture area that expands under pressure to seal the hole
- Mushroom-shaped head seats on the inner wall
- Kit includes plug gun, nozzle, 25 plugs & lubricant

Part No. 85-01085.....\$59.95

Extra plugs, Bag of 50... No. 85-03075.....\$16.95

XB-455 TIRE BEAD BREAKER ATV/UTV



The quality of this tool is exceptional, BeadBuster works to maintain strict quality control, to ensure a final product that will deliver years of reliable use. With the home mechanic and trail rider in mind, it was specifically designed for difficult-to-remove ATV tires, but we soon realized that it worked just as well on just about every kind of tire there is including motorcycle tires. No adjustment is needed for different tire/wheel sizes. It is small, portable, and perfect for stashing in your glove box or toolbox. Save time, money, and frustration by quickly and easily changing your own tires whenever, and wherever you want.

P/N 873000.....\$99.95

TRAILER PARTS

2 TON HYDRAULIC JACK



Change tires on the go with ease! Small and compact so its easy to bring a long when you need it. Heavy duty steel construction provides years of reliable performance! A must have for those on the go!

HY-JACK \$39.95

15" Tire Iron

Use to pry tire over the rim for removal after breaking bead and for easier installation of tire onto rim. This tool makes this job MUCH easier.

Part No. 57-6212

\$20.99



Bearing Protectors



Enables you to grease the hubs easily, keeps excess grease off tires. Comes with protective vinyl cap. Fits hubs below. Sold in pairs.

2" Protector BB1985.....\$26.95

2" Plastic Cover BB19.....\$ 6.95

Hitch Balls, & Couplers

1-7/8" ball for 2" square tongue. No. 52-1706...\$22.95

1-7/8" ball for 3" square tongue. No. 52-1704...\$19.95

2" ball for 2" square tongue. No. 52-1705...\$27.10

2" ball for 3" square tongue. No. 41-4203...\$26.95

1-7/8" Hitch Ball, DT5012.... \$14.95



AXLE TIE PLATE KIT



- * Yellow zinc U-Bolts
- * Fits 1-3/4" wide springs
- * Contains parts to attach 2 springs to axle
- * Galvanized plates
- * Includes: 2 tie plates, 4 U-Bolts, 8 locknuts & washers
- * Axle size: 1-1/2" Square
- Part # CS23102..... \$28.95

22x11-8 TIRES & TRAILER WHEELS



8"- 4 bolt wheel only, white
No. 58-8025.....\$45.95

8"- 5 bolt wheel only, white
No. 58-8024.....\$45.95

Tire Only 22x11-8

MUDLITE AT\$129.95

GBC Dirt Devil.....\$113.95

Tubes for tires: 87-0028...\$24.95



Hubs

Includes bearings, seal, dust cap and lug nuts, sh. wt 7 lbs.

4-bolt hubs. HSH4....\$58.95

5-bolt hubs. HSH5....\$58.95



Replacement wheel bearings

Set does 1 wheel, includes bearings, seal and cotter pin

1", Part no. 0662.....\$17.95



2" Dust cap, Part GCP10.....\$2.00



WHEEL LUG NUTS/BOLTS

For trailers (not for ATV)

Lug Bolt #WBT12...\$1.75 ea.

1/2" Lug Nut #LN12...\$.95 ea.

FOR Honda / Yam. 10mm,
#57-9409...\$3.00 EACH



WE CARRY HIGHWAY TRAILER TIRES

ATV TIRES

ITP CRYPTID



27x10-14 59-60626 \$261.95
28x10-14 59-60627 \$286.95
30x9-14 59-60624 \$306.95
30x10-14 59-60620 \$320.95

Proven Chevron "V" Tread. 1.5" lug at the center with 2" tread at the shoulder. 6 ply rated tire. AGGRESSIVE!

ITP BLACKWATER EVOLUTION



8 PLY RATED Unique non directional design that provides awesome traction while maintaining a smooth ride. "Tough Tread" rubber ensures a long life and unmatched abrasion resistance. This is one of the TOUGHEST tires we carry.

25x9-12 59-6310 \$230.95
25x11-12 59-6311 \$254.95
26x9-12 59-6312 \$244.95
26x11-12 59-6313 \$266.95
27x9-12 59-6314 \$267.95
27x11-12 59-6315 \$293.95
28x10-12 \$59-6318 \$284.95

SEDONA MUD REBEL



570-4000.....25x8-12.....\$104.95
570-4001.....24x8-12.....\$98.95
570-4002.....26x9-12.....\$116.95
570-4003.....27x10-14.....\$150.95
570-4004.....25x10-12.....\$124.95
570-4005.....25x11-10.....\$132.95
570-4006.....26x10-12.....\$136.95
570-4007.....26x12-12.....\$150.95
570-4008.....27x12-14.....\$169.95
570-4009.....24x9-11.....\$109.95

SEDONA COYOTE



Ultra durable 6 ply construction. Specialized all terrain tread design integrated with smooth ride technology

570-4200	25x8-12	\$109.95
570-4201	25x10-12	\$122.95
570-4204	27x9-12	\$129.95
570-4205	27x11-12	\$149.95

ATV Tire Chains



V-BAR CHAINS WITH CASE



(A) Med. Fits:	(B) Lg. Fits:	(C) X-Lg. Fits:	(D) XX-Lg. Fits:
22x11-9	24x9-11	25x12-9	26x12-12
23x8-11	24x8-11	24x10-11	27x10-12
22x11-8	24x8-12	25x10-12	27x12-12
22x11-10	25x8-12	26x9-12	

CHAIN PRICES:

A. Medium	61-4716	\$69.95
B. Large	61-4717	\$74.95
C. X-Large	61-4718	\$84.95
D. XX-Large	61-4719	\$99.95



TIRE CHAIN BUNGIES
61-4720.....\$19.95 PR.

MOTOR CYCLE PARTS

WE HAVE MOTOR BIKE TIRES AND TUBES CALL US WITH YOUR SIZES

WE ALSO CARRY CHAIN AND SPROCKETS AND MX APPAREL, SAFETY GEAR AND HELMETS



NOTE: PRICES MAY CHANGE WITHOUT NOTICE. CALL FOR CURRENT TIRE PRICES. WORLD OIL PRICES DRASTICLY EFFECT THE PRICE OF TIRES.



ITP ATV TIRES



MUD LITES



MUD LITE AT

- Unique center tread contact area provides a smooth ride
- Angled shoulder lugs provide unmatched mud/snow traction
- 6-ply rating for increased durability
- AT Tires have 3/4" Lug
- XL Tires have 1-1/8" Lug

MUD LITE XL

MUD LITE: all are 6-ply rating

57-5605	22x11-8	\$129.95
57-5610	22x11-9	\$134.95
57-5612	25x12-9	\$143.95
57-5620	22x8-10	\$108.95
57-5621	22x11-10	\$138.95
57-5624	23x8-10	\$113.95
57-5625	23x10-10	\$127.95
57-5629	25x11-10	\$148.95
57-5635	23x8-11	\$112.95
57-5637	24x8-11	\$116.95
57-5638	24x9-11	\$126.95
57-5639	24x10-11	\$135.95
57-5643	25x8-11	\$136.95
57-5644	25x10-11	\$144.95
57-5645	24x8-12	\$123.95
57-5648	25x8-12	\$113.95
57-5649	25x10-12	\$135.95
57-5651	25x8-12 XL	\$137.95
57-5652	25x10-12 XL	\$166.95
57-5650	26x9-12 XL	\$157.95
57-5653	26x10-12 XL	\$164.95
57-5654	26x12-12 XL	\$184.95
57-5655	27x9-12 XL	\$181.95
57-5656	27x10-12 XL	\$207.95
57-5657	27x12-12 XL	\$216.95
57-5659	28x10-12 XL	\$219.95
57-5660	28x12-12 XL	\$226.95
57-5601	27x10-14 XL	\$178.95
57-5602	27x12-14 XL	\$185.95

ITP MUD LITE XTR

Industries first Extreme Terrain Radial tire

- Combines the award-winning technology of Mud Lite and 589M/S to produce the smoothest riding mud tire on the market today
- Super-aggressive tread design features deep, angled, grooved lugs to achieve an exceptional level of traction, 1-1/8" lug
- Radial construction means the Mud Lite XTR rides smoothly and finds more traction than a bias-ply tire because of a larger contact patch - a radial tires footprint actually grows under load
- Light in weight yet still 6-ply tough



MUD LITE XTR

ITP XTR

57-5667	25x8-12	\$201.95
57-5668	25x10-12	\$223.95
57-5661	26x9-12	\$209.95
57-5662	26x11-12	\$228.95
57-5663	27x9-12	\$219.95
57-5664	27x11-12	\$240.95
57-5665	27x9-14	\$246.95
57-5666	27x11-14	\$275.95

ITP MAYHEM

- Most aggressive mud/trail tire ever
- Features a unique, deep-lug tread design that mocks the nastiest mud holes but still plays nice on harder trail surfaces
- Lightweight carcass construction
- Exceptional acceleration and braking characteristics, balanced cornering qualities make the Mayhem a capable, confident all-round performer
- 6-ply rating
- Distinctive, tribal-inspired, embossed artwork



MAYHEM

ITP MAYHEM 1" LUG

59-60588	26x9-12	\$188.95
59-60590	26x11-12	\$208.95

MEGA MAYHEM 1.5" LUG

59-60600	27-9-12	\$202.95
59-60601	27x11-12	\$218.95
59-60602	28x9-12	\$236.95
59-60603	28x11-12	\$244.95
59-60604	27x9-14	\$228.95
59-60605	27x11-14	\$233.95



MEGA MAYHEM

WE HAVE STEEL WHEELS FOR MANY MAKES AND MODELS AVAILABLE. CALL FOR AVAILABILITY. ALMOST ALL 12" STEEL WHEELS ARE RUNNING \$62.95 PER WHEEL AND 14" STEEL WHEELS ARE \$95.95 PER WHEEL.

cut here

Estimated Postage	
Insurance Fee	
Order Total	

**NOTE: SORRY!!!
WE ARE NO LONGER
SENDING PARCELS OUT COD.
THIS IS DUE TO THE LARGE
NUMBER OF REFUSED COD'S
AND BAD CHECKS.**

- Send order to:
FISH CREEK SALES, LLC
5800 E. Columbus Way, Wasilla Alaska, 99654

ORDER FORM -- FILL OUT BEFORE YOU CALL OR MAIL WITH PAYMENT

FISH CREEK SALES

5800 E. Columbus Way, Wasilla Alaska, 99654
Phone Orders: 1-800-446-2611, Fax: 1-907-373-2634
Information: 1-907-373-2650, www.fishcreek.biz
Hours: 9:00 - 6:00 Mon. - Fri., 10:00 - 4:00 Sat.

NAME _____ PHONE _____ DATE _____

BOX _____ VILLAGE _____ ZIP _____

ORDERING INFORMATION

SHIPPING:

All orders will be sent priority mail. You pay for shipping charges. If you send prepayment with your order call for order total with shipping charges.

PAYMENT AND PRICES:

We no longer ship COD. Send money order or use credit cards or check/debit cards. Call us for your order total and you can get a money order made and after you mail the money order call us with the serial number from the money order receipt and we will immediately process your order.

WE TRY TO KEEP PRICES AS ADVERTISED IN THE CATALOG BUT PRICES ARE SUBJECT TO CHANGE WITHOUT NOTICE.

COD:

WE NO LONGER SHIP COD DUE TO THE LARGE AMOUNT OF REFUSED COD'S AND BAD CHECKS THAT WE HAVE RECEIVED FOR COD PAYMENT.

BACKORDERS:

Items out of stock will be backordered and charged to your order so you only have one fee, and we will send the backordered item to you as soon as it comes in without any other shipping charges. At times we may hold your order if we have the items in transit for 3-4 days in order to send you the complete order unless you tell us to send what we have and backorder the rest.

RETURNS & EXCHANGES:

All returns must be received with the original invoice and packaging and in an unused, resalable condition for refund within 30 days of invoice shipping date. PROPELLERS MAY BE RETURNED FOR EXCHANGE IF THE PITCH IS NOT PROPER AS LONG AS YOU DON'T DAMAGE THE BLADES OR SCRATCH UP THE FINISH. No returns accepted for special orders or on electrical items. A 15% restocking fee will be charged on all acceptable returns. WE DO NOT REFUND POSTAGE CHARGES ON RETURNS. Items returned for exchange will not be charged a restocking fee. You are responsible for postage both ways on exchanges, except on items that we sent by mistake, then we will pay the postage and credit you against your next order for your cost of the return postage.

SPECIAL ORDERS:

We can order many items or parts that are not in our catalog that we do not stock. We require a 50% deposit on special orders and prepayment before shipping, NO COD, and no returns on special orders.

To help us fill your order please give us as much information as possible:

Make, model and year, engine size, number of cylinders, etc. of machine: _____

NOTE: For chainsaw bars and chain orders we need extra information to get the right chain or saw bars to you. The most important info you can give us is the number on the bottom link (drive link) of the chain and count how many of those drive links there are.



ORDER ONLINE AT: www.fishcreek.biz
E-mail us at: fcsales@mtaonline.net



cut here

Estimated Postage	
Insurance Fee	
Order Total	

**NOTE: SORRY!!!
WE ARE NO LONGER
SENDING PARCELS OUT COD.
THIS IS DUE TO THE LARGE
NUMBER OF REFUSED COD'S
AND BAD CHECKS.**

- Send order to:
FISH CREEK SALES, LLC
5800 E. Columbus Way, Wasilla Alaska, 99654

ORDER FORM -- FILL OUT BEFORE YOU CALL OR MAIL WITH PAYMENT

FISH CREEK SALES

5800 E. Columbus Way, Wasilla Alaska, 99654
Phone Orders: 1-800-446-2611, Fax: 1-907-373-2634
Information: 1-907-373-2650, www.fishcreek.biz
Hours: 9:00 - 6:00 Mon. - Fri., 10:00 - 4:00 Sat.

NAME _____ PHONE _____ DATE _____

BOX _____ VILLAGE _____ ZIP _____

ORDERING INFORMATION

SHIPPING:

All orders will be sent priority mail. You pay for shipping charges. If you send prepayment with your order call for order total with shipping charges.

PAYMENT AND PRICES:

We no longer ship COD. Send money order or use credit cards or check/debit cards. Call us for your order total and you can get a money order made and after you mail the money order call us with the serial number from the money order receipt and we will immediately process your order.

WE TRY TO KEEP PRICES AS ADVERTISED IN THE CATALOG BUT PRICES ARE SUBJECT TO CHANGE WITHOUT NOTICE.

COD:

WE NO LONGER SHIP COD DUE TO THE LARGE AMOUNT OF REFUSED COD'S AND BAD CHECKS THAT WE HAVE RECEIVED FOR COD PAYMENT.

BACKORDERS:

Items out of stock will be backordered and charged to your order so you only have one fee, and we will send the back-ordered item to you as soon as it comes in without any other shipping charges. At times we may hold your order if we have the items in transit for 3-4 days in order to send you the complete order unless you tell us to send what we have and backorder the rest.

RETURNS & EXCHANGES:

All returns must be received with the original invoice and packaging and in an unused, resalable condition for refund within 30 days of invoice shipping date. PROPELLERS MAY BE RETURNED FOR EXCHANGE IF THE PITCH IS NOT PROPER AS LONG AS YOU DON'T DAMAGE THE BLADES OR SCRATCH UP THE FINISH. No returns accepted for special orders or on electrical items. A 15% restocking fee will be charged on all acceptable returns. WE DO NOT REFUND POSTAGE CHARGES ON RETURNS. Items returned for exchange will not be charged a restocking fee. You are responsible for postage both ways on exchanges, except on items that we sent by mistake, then we will pay the postage and credit you against your next order for your cost of the return postage.

SPECIAL ORDERS:

We can order many items or parts that are not in our catalog that we do not stock. We require a 50% deposit on special orders and prepayment before shipping, NO COD, and no returns on special orders.

To help us fill your order please give us as much information as possible:

Make, model and year, engine size, number of cylinders, etc. of machine: _____

NOTE: For chainsaw bars and chain orders we need extra information to get the right chain or saw bars to you. The most important info you can give us is the number on the bottom link (drive link) of the chain and count how many of those drive links there are.



ORDER ONLINE AT: www.fishcreek.biz
E-mail us at: fsales@mtaonline.net



Camso ATV/UTV track systems



**ROAD
FREE
COMPANY**

Camso track systems will keep you moving by distributing your vehicle's weight over a greater surface area.

That means you can go just about anywhere, on any surface.

Push your vehicle's performance to the next level with a four-season track system that will never let you down.

Camso ATV R4S - For small all-terrain vehicle from 300cc to 500cc- **\$3098.95**

Camso ATV X4S - For all-terrain vehicle from 300cc to 1000cc- **\$4899.00**

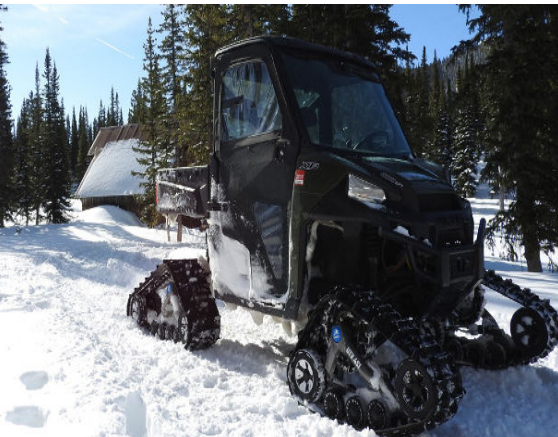
Camso UTV 4S1 For side-by-side vehicle from 400cc to 1000cc- **\$6399.00**

PRSRT STD
US POSTAGE PAID
PORTLAND, OR
PERMIT NO. 2160

5800 E. COLUMBUS WAY
WASILLA, AK 99654

**FISH CREEK
SALES**
POSTMASTER-GIVE AWAY IF UNDELIVERABLE

Will fit many makes and models, please
have year make and model ready. call for
availabilty and shipping qoute.



E-mail us at:

fcsales@mtgonline.net

Follow us on social media

Instagram @fishcreeksales

Facebook <https://www.facebook.com/fishcreeksales/>

Check facebook for
new product and
sales info